

# HALE TOWNSHIP

Each township has six files containing six sections in each, and one file containing all 36 sections.

Hale01to06.pdf  
Hale07to12.pdf  
Hale13to18.pdf  
Hale19to24.pdf  
Hale25to30.pdf  
Hale31to36.pdf  
HaleAll36.pdf

The points are listed starting with the point above the SE corner and continuing in a counter-clockwise rotation around the section. This normally begins with the East point, Northeast, then North, but may also include Witness Corners, and/or Meander Corners.

## **Definitions**

**Witness Corner:** A witness corner “stands in” when the true corner cannot be monumented or occupied because of difficult terrain or obstruction of the corner sight. The witness corner must be on the section line and is usually 5 or 10 chains away from the true corner.

**Meander Corner:** The intersection of a township, range, or section line and the banks of a navigable stream or meandering body of water.

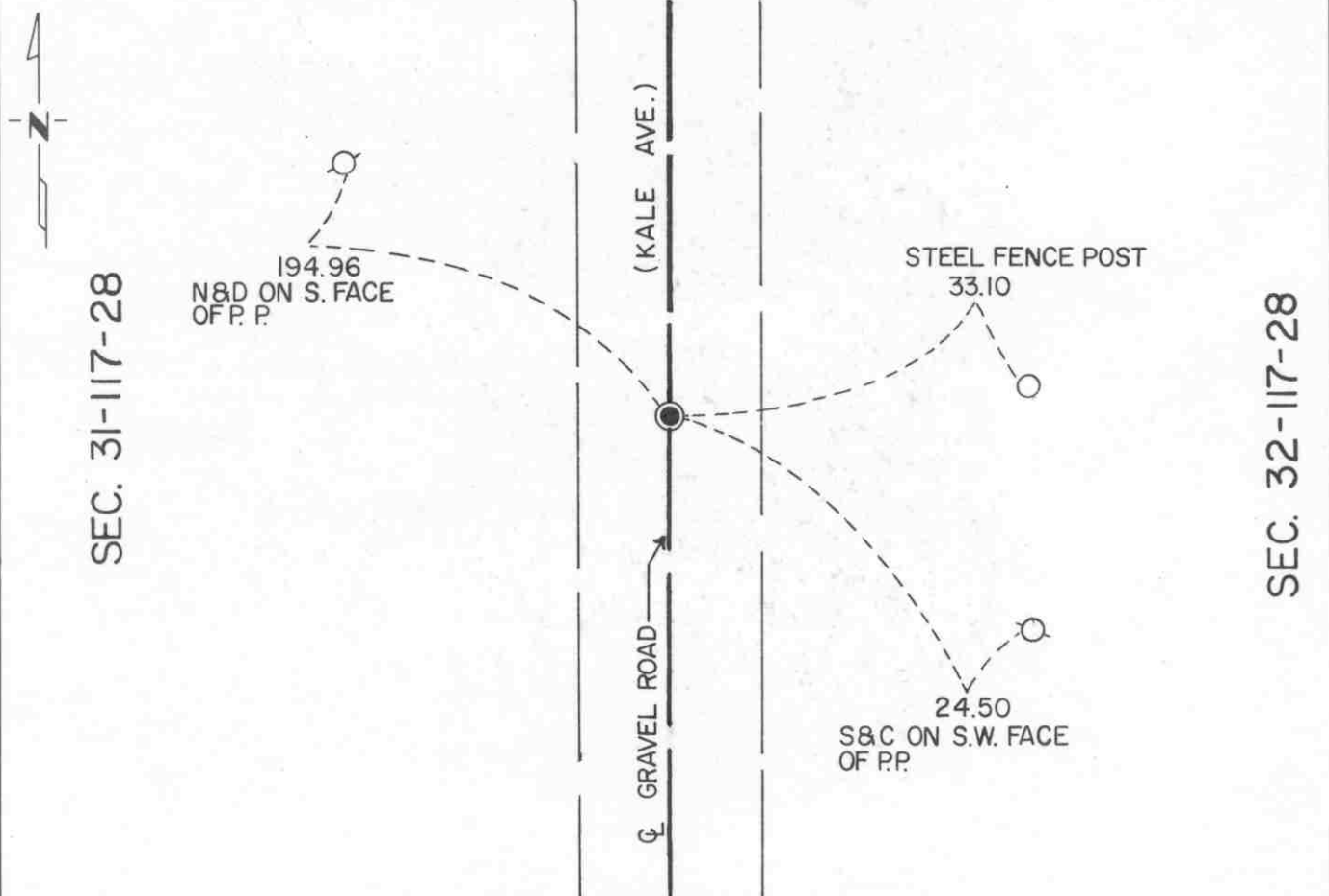
# CERTIFICATE OF LOCATION OF GOVERNMENT CORNER

EAST QUARTER Corner of Section 31, Township 117 N, Range 28 W, 5<sup>th</sup> P.M.  
STATE OF MINNESOTA, County of MCLEOD

At the corner location shown on the sketch:

- On Aug. 6, 1991 found a CAST IRON MONUMENT ABOUT 3" BELOW  
DATE THE ROAD SURFACE
- left monument as found,  lowered monument,  removed monument (explain)
- On \_\_\_\_\_ placed a \_\_\_\_\_  
DATE \_\_\_\_\_

### SKETCH OF REFERENCE TIES



Statement of evidence relative to this corner location is on back of page.

I hereby certify that this document and the data contained herein was prepared by me or under my direct supervision.

Robert Jones 7-22-92  
SIGNATURE DATE

Registration No. 11864

- Land Surveyor,  Professional Engineer
- County Surveyor,  County Engineer

### OFFICE OF THE COUNTY RECORDER

County of McLeod

I hereby certify that this document was filed in the Co. Recorders office at 9 A. .M. on the 29<sup>th</sup> day of July A.D., 1992

County Recorder Armen Oslie

By \_\_\_\_\_, Deputy

DOCUMENT NO. 246750

Statement of Evidence:

East Quarter Corner Section 31, T 117 N, R 28 W

- 1856 - The original Public Land Survey was completed by Oscar Taylor. A wood post was set to mark the corner and reference was made to two bearing trees.
- 1972 - Dickman Knutson, McLeod County Surveyor, dug for the corner. Traces of an old wood post were found 3 feet below the road surface. The post was located at the centerline of a north/south road, in line with a fence to the west, 3 feet south of a fence line to the east, and it fit a property line fence which is 990 feet north of the corner and runs to the east. A cast iron monument was set above the traces of the wood post and reference ties were set.
- 1988 - Willard Pellinen, McLeod County Surveyor, recovered the cast iron monument when he traversed around Section 32.
- 1991 - R. C. Jones, Registered Land Surveyor with Mn/DOT, found the cast iron monument about 3" below the road surface. It was located at the centerline of the north/south road. Neither of the fence lines east or west of the corner exist any more.

The cast iron monument is accepted as the corner location because it perpetuated older monumentation that may have been the remains of the original post, it did fit long standing occupation lines at the time it was set, and it fit a property description to the north. It is located 8.47 feet east and 6.86 feet north of the lost location.

For additional information, contact the Mn/DOT Surveys Section at Willmar, Mn 56201.

# CERTIFICATE OF LOCATION OF GOVERNMENT CORNER

MEANDER CORNER No. 17  
 ALONG THE EAST LINE \_\_\_\_\_ of Section 31, Township 117N, Range 28W, 5<sup>th</sup> P.M.

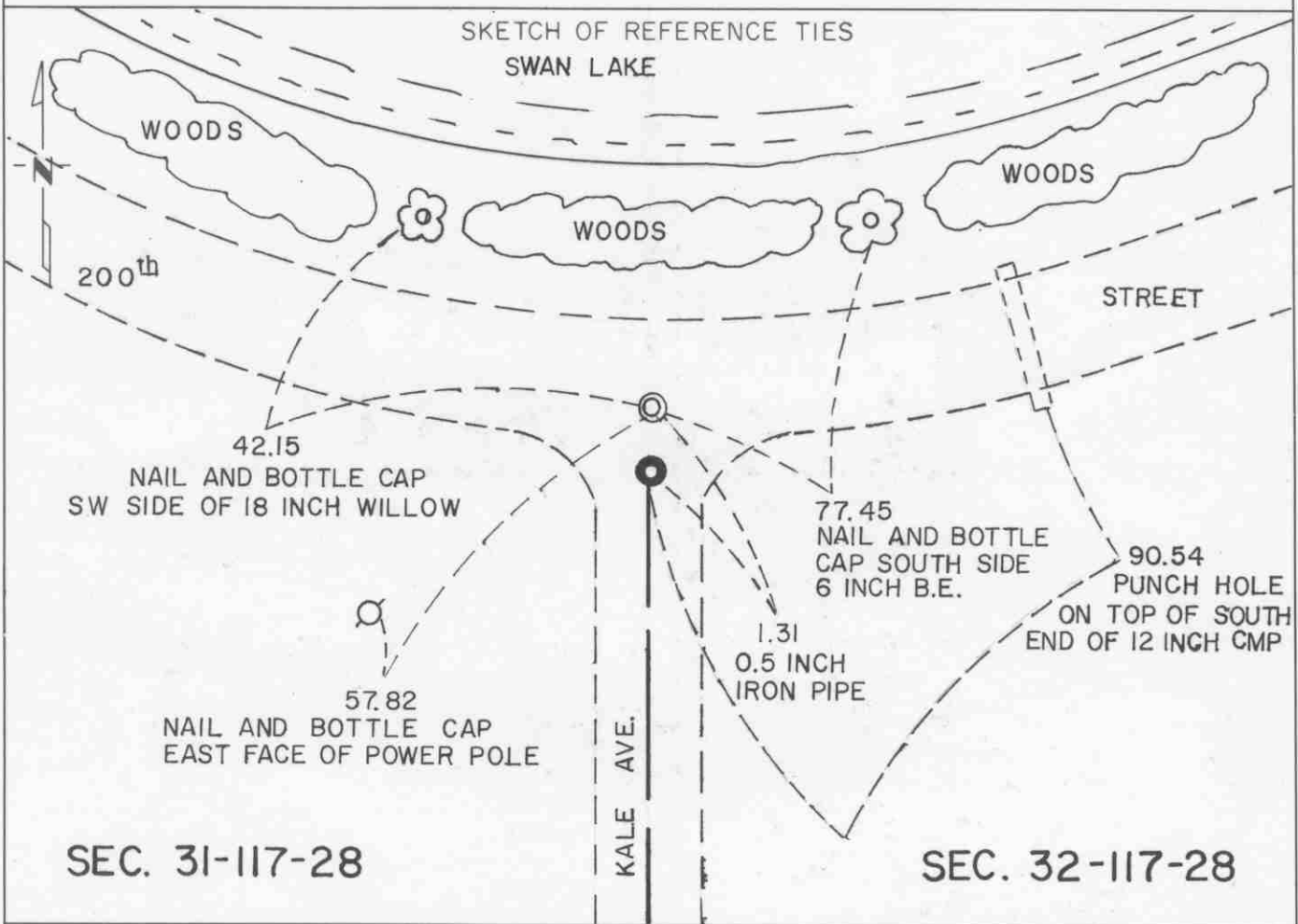
STATE OF MINNESOTA, County of MCLEOD

At the corner location shown on the sketch:

On AUG. 6, 1991 found a CAST IRON MONUMENT ABOUT 3" BELOW  
DATE THE ROAD SURFACE

left monument as found,  lowered monument,  removed monument (explain)

On \_\_\_\_\_ placed a \_\_\_\_\_  
DATE



Statement of evidence relative to this corner location is on back of page.

I hereby certify that this document and the data contained herein was prepared by me or under my direct supervision.

Robert Jones 7-22-92  
SIGNATURE DATE

Registration No. 11864

- Land Surveyor,  Professional Engineer  
 County Surveyor,  County Engineer

OFFICE OF THE COUNTY RECORDER

County of McLeod

I hereby certify that this document was filed in the Co. Recorders office at 9 A. .M. on the 29<sup>th</sup> day of July A.D., 1992

County Recorder Charlene Ostlie

By \_\_\_\_\_, Deputy

DOCUMENT NO. 246751



Statement of Evidence:

Meander Corner No. 17

On the East Line of Section 31, T 117 N, R 28 W

- 1856 - The original Public Land Survey was completed by Oscar Taylor. A wood post was set to mark the corner and reference was made to two bearing trees.
- 1982 - Willard Pellinen, McLeod County Surveyor, surveyed along the north lines of Sections 31 and 32, and the east lines of Sections 30 and 31. He computed a position for the corner based on an analysis of these surveys as compared to the original government chainages.
- 1989 - Willard Pellinen set a cast iron monument at the computed location to mark the corner. Reference ties were set.
- 1991 - R. C. Jones, Registered Land Surveyor with Mn/DOT, found the cast iron monument about 3" below the road surface.

The cast iron monument is accepted as the meander corner because it was set according to an analysis of the present circumstances as compared to the original survey and it is at the centerline of a north/south road which is along the east line of the section.

For additional information, contact the Mn/DOT Surveys Section at Willmar, Mn 56201.

# CERTIFICATE OF LOCATION OF GOVERNMENT CORNER

WITNESS CORNER TO M.C. No. 18

ON THE NORTH LINE \_\_\_\_\_ of Section 31, Township 117N, Range 28W, 5<sup>th</sup> P.M.

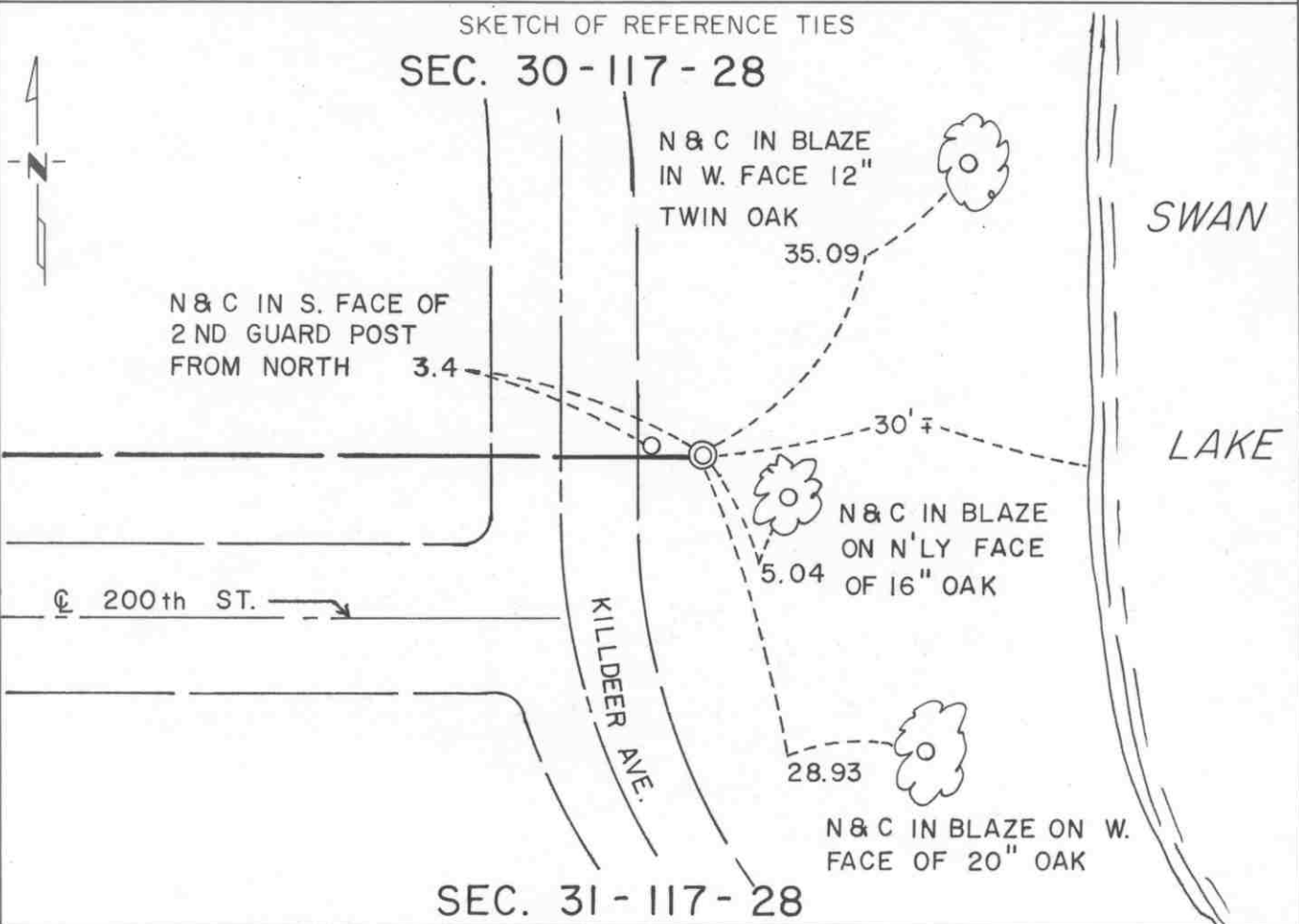
STATE OF MINNESOTA, County of McLEOD

At the corner location shown on the sketch:

On AUG. 6, 1991 found a CAST IRON MONUMENT ABOUT 6" BELOW  
DATE THE GROUND SURFACE

left monument as found,  lowered monument,  removed monument (explain)

On \_\_\_\_\_ placed a \_\_\_\_\_  
DATE



Statement of evidence relative to this corner location is on back of page.

I hereby certify that this document and the data contained herein was prepared by me or under my direct supervision.

Robert J. Gans  
SIGNATURE

7-23-92  
DATE

Registration No. 11864

Land Surveyor,  Professional Engineer

County Surveyor,  County Engineer

OFFICE OF THE COUNTY RECORDER

County of McLeod

I hereby certify that this document was filed in the Co. Recorders office at 9 A. .M. on the 29<sup>th</sup> day of July A.D., 1992

County Recorder Armen Ostlie

By \_\_\_\_\_, Deputy

DOCUMENT NO. 246754

Statement of Evidence:

Witness Corner to Meander Corner No. 18 on the  
North Line of Section 31, T 117 N, R 28 W

- 1856- The original Public Land Survey was completed by Oscar Taylor. A wood post was set to mark the meander corner.
- 1985- Willard Pellinen, McLeod County Surveyor, found a 1" diameter by 20" long iron pin a distance of 39.26 feet northerly of a cast iron monument. Surveys were conducted along the east lines of Sections 30 and 31 and along the north lines of Section 31 and 32. An analysis of these surveys indicated that the found iron pin was located 14.03 feet west of the computed location for Meander Corner No. 18. A cast iron monument was set over the found iron pin to act as a Witness Corner to the Meander Corner. The cast iron monument located 39.26 feet to the south was pulled out.
- 1991- R. C. Jones, Registered Land Surveyor with Mn/DOT, found the cast iron monument about 6" below the ground. It was located as shown in the County Surveyor's notes. All but one of the reference ties were found as shown in the notes. One new reference was made.

The cast iron monument is accepted as a Witness Corner to the Meander Corner because it perpetuates older monumentation and fits into an analysis of the resurveys of the section lines in the area.

For additional information, contact the Mn/DOT Surveys Section in Willmar, Mn 56201.

# CERTIFICATE OF LOCATION OF GOVERNMENT CORNER

NORTH QUARTER Corner of Section 31, Township 117 N, Range 28 W, 5<sup>th</sup> P.M.

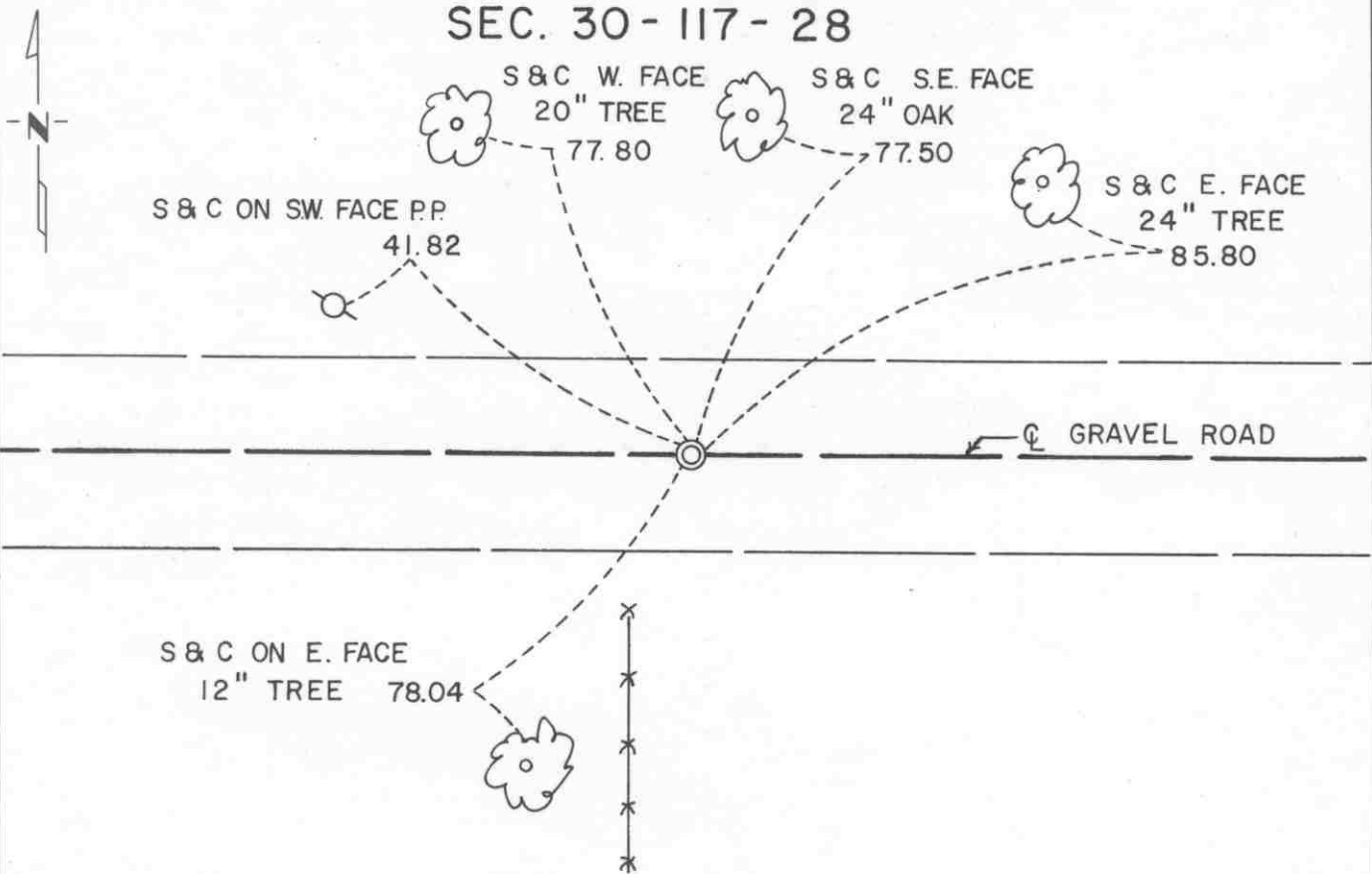
STATE OF MINNESOTA, County of MCLEOD

At the corner location shown on the sketch:

- On FEB. 1991 found a CAST IRON MONUMENT ABOUT 6" BELOW  
DATE THE ROAD SURFACE
- left monument as found,  lowered monument,  removed monument (explain)
- On \_\_\_\_\_ placed a \_\_\_\_\_  
DATE

### SKETCH OF REFERENCE TIES

**SEC. 30 - 117 - 28**



**SEC. 31 - 117 - 28**

Statement of evidence relative to this corner location is on back of page.

I hereby certify that this document and the data contained herein was prepared by me or under my direct supervision.

Robert Jones  
SIGNATURE

7-22-92  
DATE

Registration No. 11864

- Land Surveyor,  Professional Engineer
- County Surveyor,  County Engineer

### OFFICE OF THE COUNTY RECORDER

County of McLeod

I hereby certify that this document was filed in the Co. Recorders office at 9 A. .M. on the 29<sup>th</sup> day of July A.D., 1992

County Recorder Charlene Ostlie

By \_\_\_\_\_, Deputy

DOCUMENT NO. 246753

Statement of Evidence:

North Quarter Corner Section 31, T 117 N, R 28 W

- 1856- The original Public Land Survey was completed by Oscar Taylor. A wood post was set to mark the corner and reference was made to two bearing trees.
- 1927 - E. L. Higgins, McLeod County Surveyor, found a gear wheel marking the corner.
- 1972 - Dickman Knutson, McLeod County Surveyor, found a 12" by 24" stone over a gear wheel about 2 feet below the road surface. They were located about 12.5 feet north of the centerline of an east/west road. Charles Urban, a local resident, said that the stone and the gear wheel on the north side of the road is considered to be the corner. The corner was located somewhat east of a fence line to the south. A cast iron monument was set over the found monuments and reference ties were set.
- 1979 - Willard Pellinen, McLeod County Surveyor, reset a cast iron monument at the corner from the reference ties that were set in 1972. The first cast iron monument had been destroyed during reconstruction of the road.
- 1991 - A Mn/DOT survey crew (Gene East, crew chief) found the cast iron monument about 6" below the road surface. It was located as shown in the County Surveyor's notes.

The cast iron monument is accepted as the corner location because it perpetuates the position of older monumentation, it substantially fit long standing occupation lines, and it is located where at least one local resident considered it to be.

For additional information, contact the Mn/DOT Surveys Section at Willmar, Mn 56201.

# CERTIFICATE OF LOCATION OF GOVERNMENT CORNER

NORTHEAST Corner of Section 36, Township 117N, Range 29W, 5<sup>th</sup> P.M.

STATE OF MINNESOTA, County of MCLEOD

At the corner location shown on the sketch:

On FEB. 1991 found a CAST IRON MONUMENT A FEW INCHES BELOW  
DATE THE ROAD SURFACE

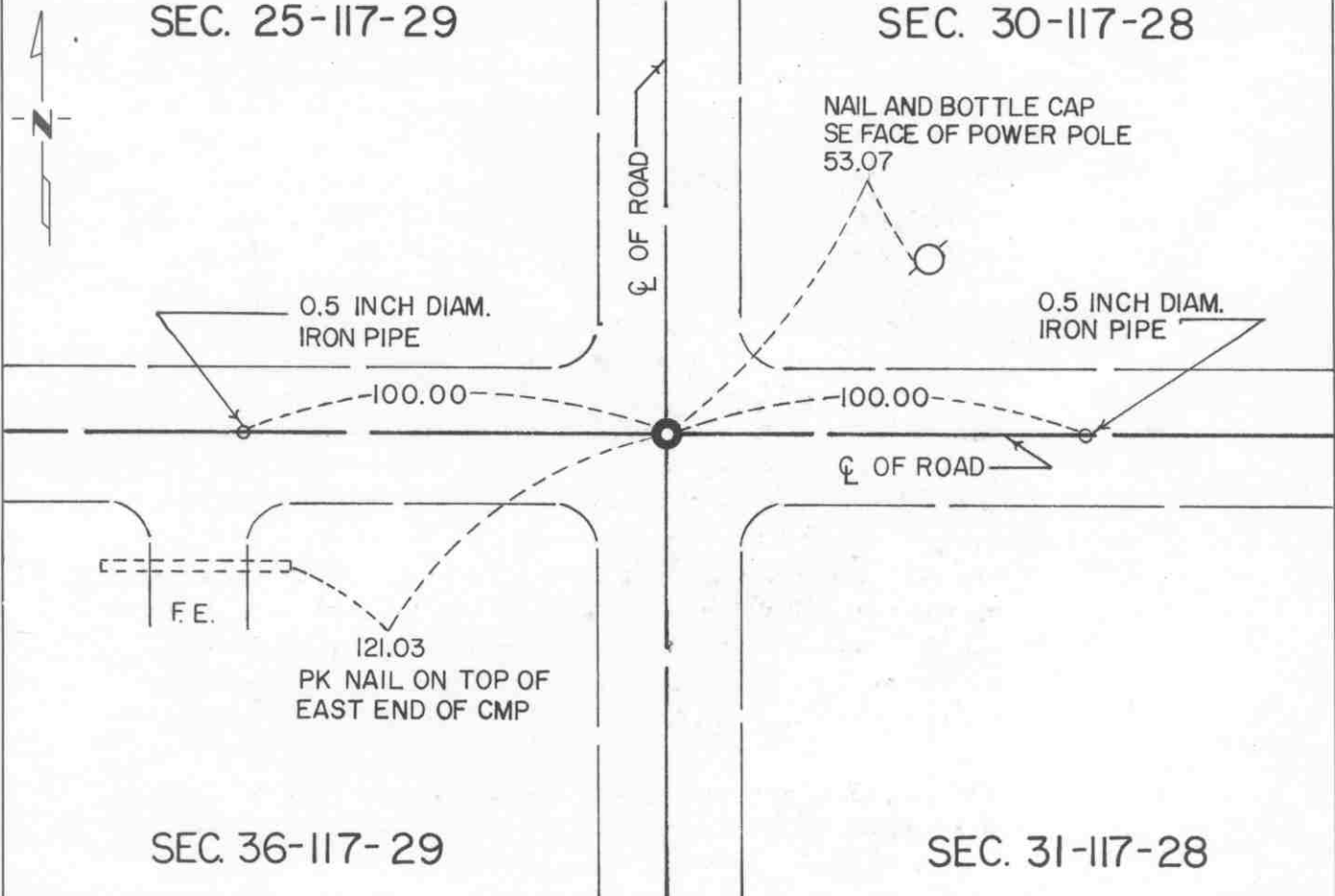
left monument as found,  lowered monument,  removed monument (explain)

On FEB. 1991 placed a P.K. NAIL AT THE ROAD SURFACE DIRECTLY  
DATE ABOVE THE CAST IRON MONUMENT

SKETCH OF REFERENCE TIES

SEC. 25-117-29

SEC. 30-117-28



Statement of evidence relative to this corner location is on back of page.

I hereby certify that this document and the data contained herein was prepared by me or under my direct supervision.

Robert Gaus  
SIGNATURE

7-22-92  
DATE

Registration No. 11864

- Land Surveyor,  Professional Engineer
- County Surveyor,  County Engineer

OFFICE OF THE COUNTY RECORDER

County of McLeod

I hereby certify that this document was filed in the Co. Recorders office at 9 A. .M. on the 29<sup>th</sup> day of July A.D., 1992

County Recorder Harmon Estlie

By \_\_\_\_\_, Deputy

DOCUMENT NO. 246785

- 1855 - The original Public Land Survey of the Range Line was completed by John Ryan. A wood post was set to mark the corner with reference to four bearing trees.
- 1901 - E. L. Higgins, McLeod County Surveyor, found a stone at the corner and measured 2624.5 ft. to the north quarter corner and 2630 ft. to the east quarter corner of the section.
- 1929 - E. L. Higgins recovered the stone.
- 1935 - McLeod County Highway Department notes show a stone at the corner.
- 1970 - Dickman Knutson, McLeod County Surveyor, hired John Tupa from Hutchinson to dig for the corner with a backhoe. A stone and a wood stake were found 4.5 ft. below the road surface. A cast iron monument was set above the found monuments.
- 1981 - Willard Pellinen, McLeod County Surveyor, found the cast iron monument about 12" below the road surface. New reference ties were set because the old ones had been destroyed.
- 1983 - Willard Pellinen found the cast iron monument and the ties. The distances to the east quarter corner and the north quarter corner were measured. They were 2632.18 ft. and 2624.81 ft. respectively, which compare favorably with Higgins' 1901 distances.
- 1989 - Willard Pellinen recovered the cast iron monument and the reference ties in good condition. It was located at the centerline intersection of an east/west road with a north/south road.
- 1991 - A Mn/DOT survey crew (Gene East, crew chief) found the cast iron monument somewhat below the surface. A P.K. nail was set over the monument at the surface. It was located at the centerline intersection of an east/west road with a north/south road.

The cast iron monument is accepted as the corner location because it perpetuates the position of a monument found 90 years ago, which in turn may have perpetuated the location of the original wood post, it fits long standing occupation lines, and it closely fits the old survey distances.

For additional information, contact the Mn/DOT Surveys Section at Willmar, Mn 56201.

# CERTIFICATE OF LOCATION OF GOVERNMENT CORNER

EAST QUARTER Corner of Section 36, Township 117N, Range 29W, 5<sup>th</sup> P.M.

STATE OF MINNESOTA, County of MCLEOD

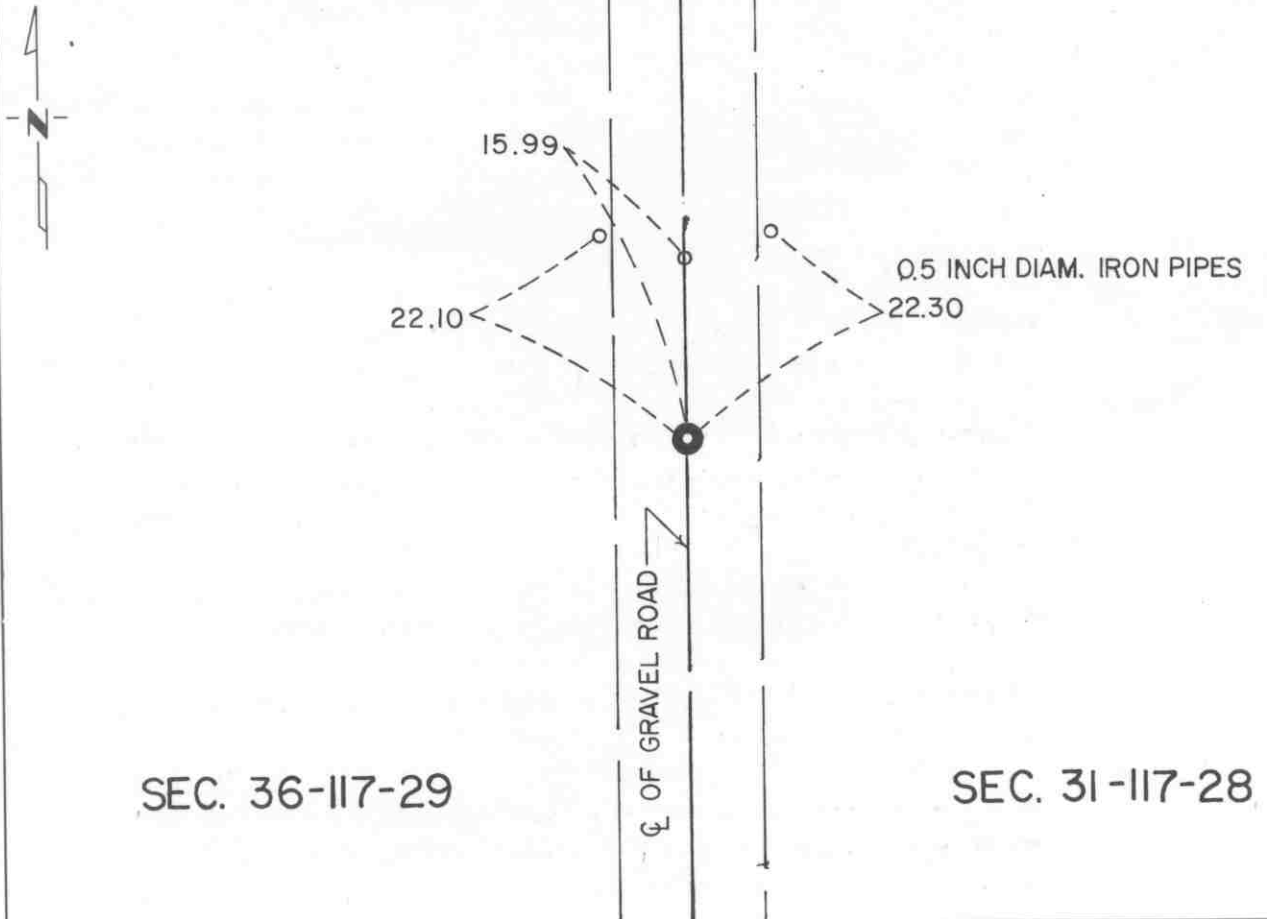
At the corner location shown on the sketch:

On AUG. 6, 1991 found a CAST IRON MONUMENT ABOUT 3" BELOW  
DATE THE ROAD SURFACE

left monument as found,  lowered monument,  removed monument (explain)

On \_\_\_\_\_ placed a \_\_\_\_\_  
DATE

SKETCH OF REFERENCE TIES



Statement of evidence relative to this corner location is on back of page.

I hereby certify that this document and the data contained herein was prepared by me or under my direct supervision.

Robert J. Jans 7-22-92  
SIGNATURE DATE

Registration No. 11864

- Land Surveyor,  Professional Engineer  
 County Surveyor,  County Engineer

OFFICE OF THE COUNTY RECORDER

County of McLeod

I hereby certify that this document was filed in the Co. Recorders office at 9 A. .M. on the 29<sup>th</sup> day of July A.D., 1992

County Recorder Armen Ostlie

By \_\_\_\_\_, Deputy

DOCUMENT NO. 246786



- 1855 - The original Public Land Survey of the Range Line was completed by John Ryan. The east quarter corner of the section was not set at that time because it fell in a lake. Meander corners were set on the south shore and the north shore of the lake at 37.50 chains and 47.52 chains respectively north of the Standard Parallel. Wood posts were set to mark these meander corners and each was referenced to two bearing trees.
- 1901 - E. L. Higgins, McLeod County Surveyor, found an old stake in the lake which was said to be the old quarter corner.
- Sometime between 1901 and 1970 the lake was drained.
- 1970 - Dickman Knutson, McLeod County Surveyor, dug for the corner and found a stone with a wood stake beside it 3 ft. below the road surface. John Tupa from Hutchinson dug with a backhoe. The found monument was located at the centerline of a north/south road and in line with a fence to the east. A cast iron monument was set over the found stone.
- 1981 - Willard Pellinen, McLeod County Surveyor, found the cast iron monument and set new reference ties.
- 1983 - Willard Pellinen found that the monument had been destroyed during road construction. The corner was reset according to the reference ties and the distances were measured to the section corners north and south. It was found that the corner was within 3 ft. of being half way between the section corners and within 2 ft. of being on the line between section corners.
- 1985 - Willard Pellinen reset a spike at the corner and later in the year replaced the spike with a cast iron monument.
- 1989 - Willard Pellinen recovered the monument and the reference ties in good condition. It was at the centerline of a north/south road and in line with a fence to the east.
- 1991 - R. C. Jones, Registered Land Surveyor with Mn/DOT, found the cast iron monument about 3" below the road surface. It was located at the centerline of a north/south road. The fence line to the east no longer exists.

The cast iron monument is accepted as the quarter corner location because it fits long standing occupation lines and is 2.07 ft. west and 3.21 ft. north of the lost location.

For additional information, contact the Mn/DOT Surveys Section at Willmar, Mn 56201.

# CERTIFICATE OF LOCATION OF GOVERNMENT CORNER

CLOSING CORNER TO

THE NORTHEAST Corner of Section 1, Township 116 N, Range 29 W, 5<sup>th</sup> P.M.

STATE OF MINNESOTA, County of MCLEOD

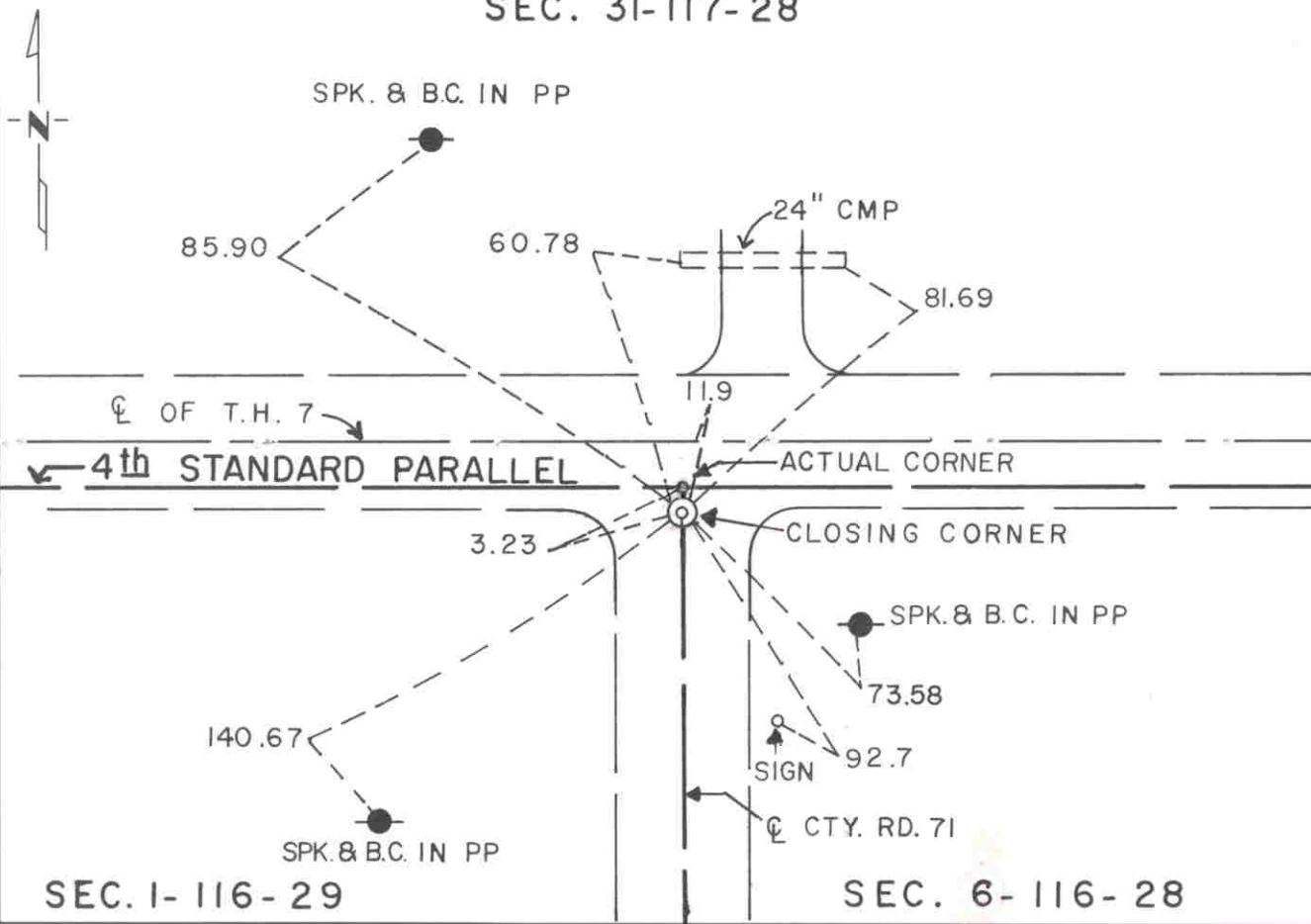
At the corner location shown on the sketch:

On FEB. 1991 found a RAILROAD SPIKE AT THE ROAD SURFACE  
DATE

left monument as found,  lowered monument,  removed monument (explain)

On \_\_\_\_\_ placed a \_\_\_\_\_  
DATE

## SKETCH OF REFERENCE TIES SEC. 31-117-28



Statement of evidence relative to this corner location is on back of page.

I hereby certify that this document and the data contained herein was prepared by me or under my direct supervision.

Robert Jones  
SIGNATURE

7-22-92  
DATE

Registration No. 11864

- Land Surveyor,  Professional Engineer  
 County Surveyor,  County Engineer

OFFICE OF THE COUNTY RECORDER

County of McLeod

I hereby certify that this document was filed in the Co. Recorders office at 9 A. .M. on the 29<sup>th</sup> day of July A.D., 1992

County Recorder Carmen Estlie

By \_\_\_\_\_, Deputy

DOCUMENT NO. 246730

- 1855 - The original Public Land Survey of the township line was completed by John Ryan. A wood post was set to mark the corner with reference to two bearing trees.
- 1937 - The Minnesota Highway Department right of way map shows the corner to be 11.9 feet south of T.H. 7 P.O.T. 306+19.2. This appears to have been about 5 feet north of the centerline of the existing east/west road and about in line with the centerline of a road to the south.
- 1938 - All evidence of this corner was probably destroyed when T.H. 7 was graded.
- 1968 - Dickman Knutson, McLeod County Surveyor, found a spike and disc 11.9 feet south of the centerline of T.H. 7 on the centerline of County Road 71 to the south. He set reference ties to the spike.
- 1979 - Dickman Knutson set a railroad spike using the old reference ties.
- 1982 - Willard Pellinen recovered the railroad spike.
- 1991 - A Mn/DOT survey crew (Gene East, crew chief) found the railroad spike at the road surface. It is located 11.64 feet south of T.H. 7 P.O.T. 306+19.24 at the centerline of County Road 71 to the south.

The railroad spike is accepted as the location of the closing corner because it fits the location shown on the highway right of way map. The actual location of the northeast corner of the section is 3.23 feet north of the closing corner on the Fourth Standard Parallel.

For additional information, contact the Mn/DOT Surveys Section at Willmar, Mn 56201.

# CERTIFICATE OF LOCATION OF GOVERNMENT CORNER

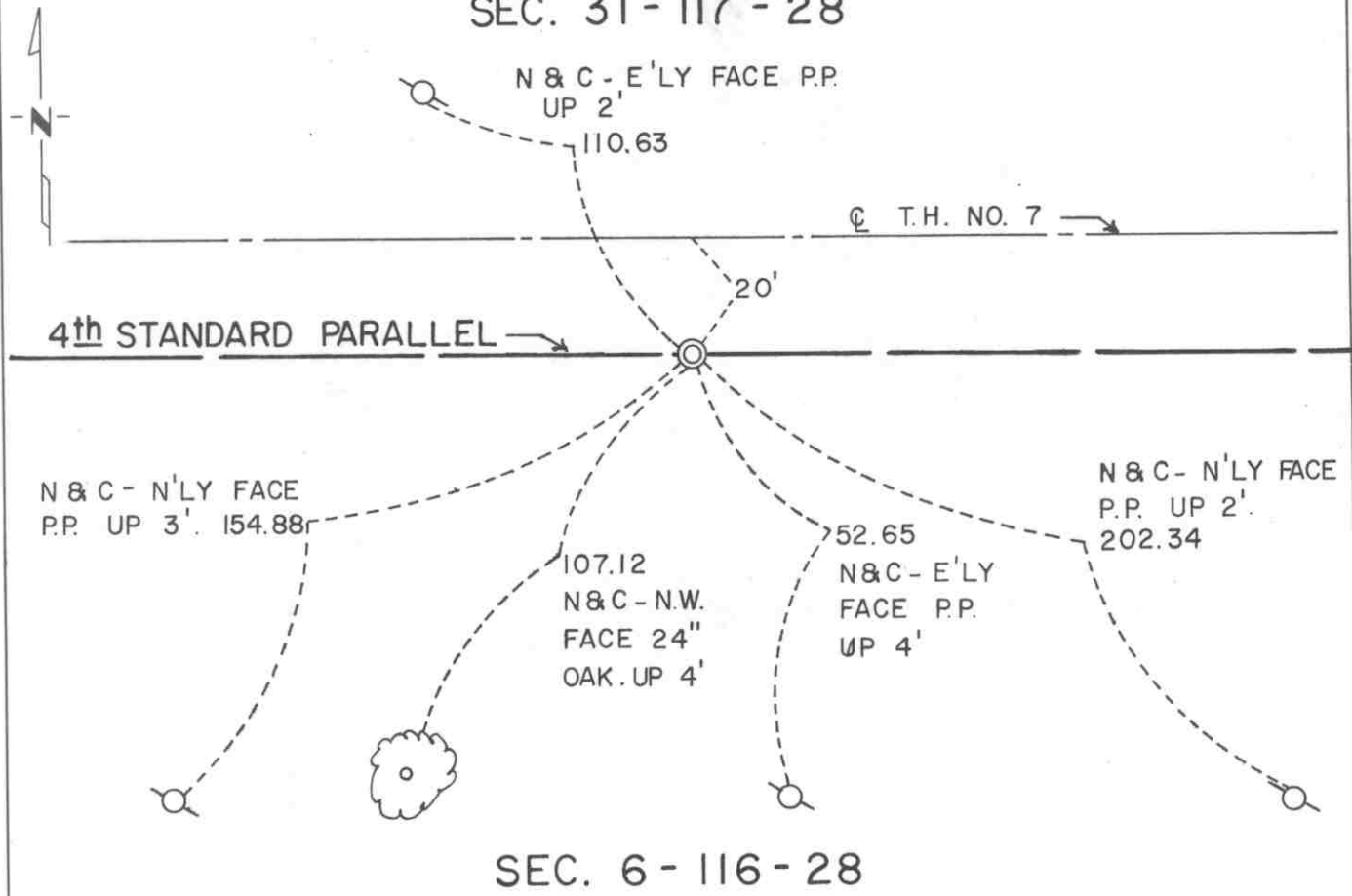
SOUTH QUARTER Corner of Section 31, Township 117 N, Range 28 W, 5<sup>th</sup> P.M.

STATE OF MINNESOTA, County of MC LEOD

At the corner location shown on the sketch:

- On FEB. 1991 found a 1/2" DIAMETER IRON PIPE ABOUT 1" BELOW  
DATE THE ROAD SURFACE
- left monument as found,  lowered monument,  removed monument (explain)
- On \_\_\_\_\_ placed a \_\_\_\_\_  
DATE

## SKETCH OF REFERENCE TIES SEC. 31 - 117 - 28



## SEC. 6 - 116 - 28

Statement of evidence relative to this corner location is on back of page.

I hereby certify that this document and the data contained herein was prepared by me or under my direct supervision.

Robert Jones  
SIGNATURE

7-22-92  
DATE

Registration No. 11864

- Land Surveyor,  Professional Engineer
- County Surveyor,  County Engineer

### OFFICE OF THE COUNTY RECORDER

County of McLeod

I hereby certify that this document was filed in the Co. Recorders office at 9 A. .M. on the 29<sup>th</sup> day of July, A.D., 1992

County Recorder Armen Costie

By \_\_\_\_\_, Deputy

DOCUMENT NO. 246755

- 1855- The original Public Land Survey of the Fourth Standard Parallel was completed by John Ryan. A wood post was set to mark the corner with reference made to two bearing trees.
- 1937 - The Minnesota Highway Department right of way map depicts the corner to be about 24 feet south of T.H. 7 P.O.T. 324+08 as scaled on the map. It was located at or near the centerline of the existing east/west road.
- 1938 - All evidence of this corner was probably destroyed when T.H. 7 was graded.
- 1971 - Dickman Knutson, McLeod County Surveyor, set a cast iron monument 20 feet south of the centerline of T.H. 7 to mark the corner according to old survey information.
- 1982 - Willard Pellinen, McLeod County Surveyor, found the bottom of the cast iron monument about 1 foot below the road surface, checked the location with previous surveys, and set a 1/2" diameter iron pipe at the road surface and above the remains of the cast iron monument.
- 1991 - A Mn/DOT survey crew (Gene East, crew chief) found the 1/2" diameter iron pipe about 0.1 foot below the road surface. It is located 20.25 feet south of T.H. 7 P.O.T. 324+10.38.

The iron pipe is accepted as the corner location because it closely fits the right of way map location and it is 0.04 feet west and 6.69 feet south of the lost location.

For additional information, contact the Mn/DOT Surveys Section at Willmar, Mn 56201.

# CERTIFICATE OF LOCATION OF GOVERNMENT CORNER

SOUTHEAST Corner of Section 31, Township 117 N, Range 28 W, 5<sup>th</sup> P.M.

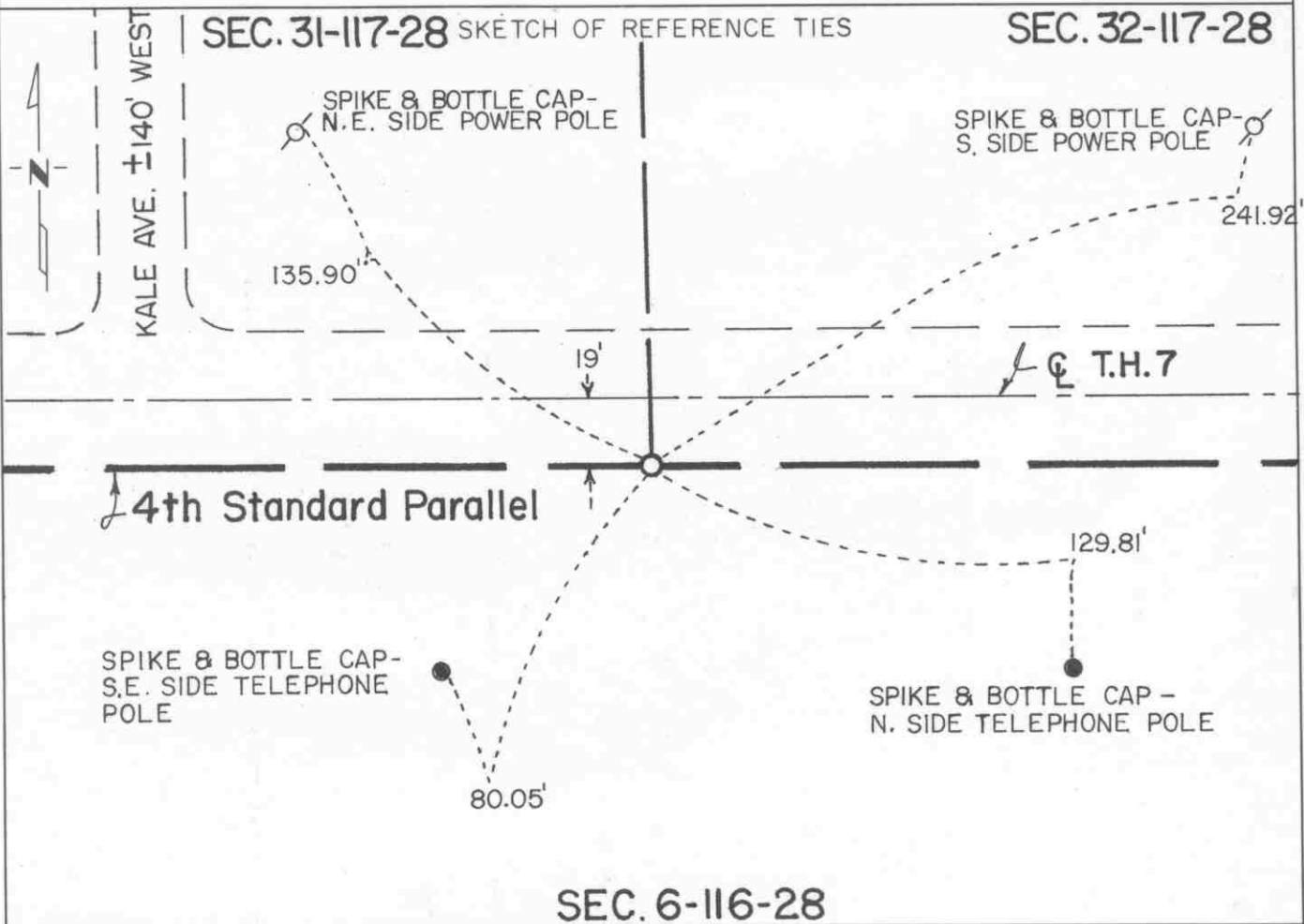
STATE OF MINNESOTA, County of MCLEOD

At the corner location shown on the sketch:

On FEB. 1991 found a CAST IRON MONUMENT ABOUT 2" BELOW  
DATE THE ROAD SURFACE

left monument as found,  lowered monument,  removed monument (explain)

On \_\_\_\_\_ placed a \_\_\_\_\_  
DATE



Statement of evidence relative to this corner location is on back of page.

I hereby certify that this document and the data contained herein was prepared by me or under my direct supervision.

Robert J. Gans  
SIGNATURE

7-24-92  
DATE

Registration No. 11864

- Land Surveyor,  Professional Engineer
- County Surveyor,  County Engineer

OFFICE OF THE COUNTY RECORDER  
County of McLeod

I hereby certify that this document was filed in the Co. Recorders office at 9 A. .M. on the 29<sup>th</sup> day of July A.D., 19 92

County Recorder Norman Estlie  
By \_\_\_\_\_, Deputy

DOCUMENT NO. 246752



Statement of Evidence:

Southeast Corner Section 31, T 117 N, R 28 W

- 1855 - The original Public Land Survey of the Fourth Standard Parallel was completed by John Ryan. A wood post was set to mark the corner and reference was made to two bearing trees.
- 1937 - The Minnesota Highway Department right of way map depicts the corner to be about 30 feet south of T.H. 7 P.O.T. 350+50 as measured on the map. It was located at or near the south edge of an east/west road and in line with a fence line to the south.
- 1938 - All evidence of the corner was probably destroyed when T.H. 7 was graded.
- 1971 - Dickman Knutson, McLeod County Surveyor, set a cast iron monument 19 feet south of the centerline of T.H. 7 according to old survey information.
- 1991 - A Mn/DOT survey crew (Gene East, crew chief) found the cast iron monument below the road surface and set a P.K. nail above the monument at the surface. It is located 19.01 feet south of T.H. 7 P.O.T. 350+48.02.

The cast iron monument is accepted as the corner location because it fits the right of way map location in an east/west direction quite well and it is nearly in line with the southerly extension of the centerline of a north/south road about a quarter of a mile to the north.

For additional information, contact the Mn/DOT Surveys Section at Willmar, Mn 56201.

# Certificate of Location of Government Corner

## SKETCH OF REFERENCE TIES (NO SCALE)



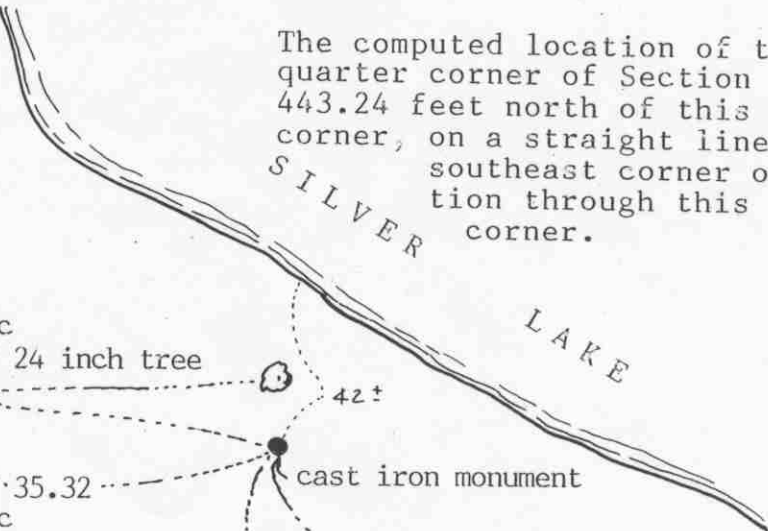
The computed location of the east quarter corner of Section 32 is 443.24 feet north of this witness corner, on a straight line from the southeast corner of the section through this witness corner.

SECTION 32

SECTION 33

Nail and disc  
West face of 24 inch tree  
6.20

Nail and disc  
North face of 18 inch tree



Ties are to conc. foundation of bldg

### Statement of evidence relative to this corner location on sheet 2

I hereby certify that this document was prepared by me or under my direct supervision.

Willard Pellinen  
Willard Pellinen  
McLeod County Surveyor  
License No. 9626

Date October 10, 1991

### OFFICE OF THE COUNTY RECORDER MCLEOD COUNTY, MINNESOTA.

I hereby certify that this document was filed in this office at 9 o'clock A. M. on the 9th day of January, 1992.

Carmen Ostlie, County Recorder

By \_\_\_\_\_, Deputy

Document No. 242771 NO FEE



WITNESS \_\_\_\_\_ corner, Section 32, Township 117 North, Range 28 West

## Certificate of Location of Government Corner

Witness corner to East Quarter Corner of Section 32, south of Silver Lake.

March 4, 1921. E. L. Higgins, surveyor, set the east quarter corner of Section 32 on the ice in Silver Lake on a straight line from the northeast corner of Section 33 through a fence on the north side of Silver Lake, on equal distances from the northeast and southeast corners of the section. He had a straight line from the east quarter corner to the southeast corner. This line was originally run by the government in 1856 by Oscar Taylor. He set 1 meander corner at a distance of 43.82 chains from the southeast corner, ~~which~~ was at the west end of Silver Lake.  
*The Meander corner*

July 1, 1979. We computed the location of the east quarter corner on a straight line from the northeast corner of Section 32 through a found axle at a fence intersection north of Silver Lake, at equal distances from the northeast and southeast corners of the section. The east quarter corner falls in the lake just as in 1921. We set a McLeod County cast iron monument south of the lake, 443.24 feet south of the east quarter corner on a straight line between the computed quarter corner and the southeast corner of Section 32.

January 25, 1991. We found the cast iron monument in good condition and checked the reference ties.

# CERTIFICATE OF LOCATION OF GOVERNMENT CORNER

WITNESS CORNER TO M.C. No. 7

ON THE EAST LINE \_\_\_\_\_ of Section 32, Township 117N, Range 28W, 5<sup>th</sup> P.M.

STATE OF MINNESOTA, County of McLEOD

At the corner location shown on the sketch:

On AUG. 28, 1991 found a CAST IRON MONUMENT AT THE GROUND SURFACE  
DATE

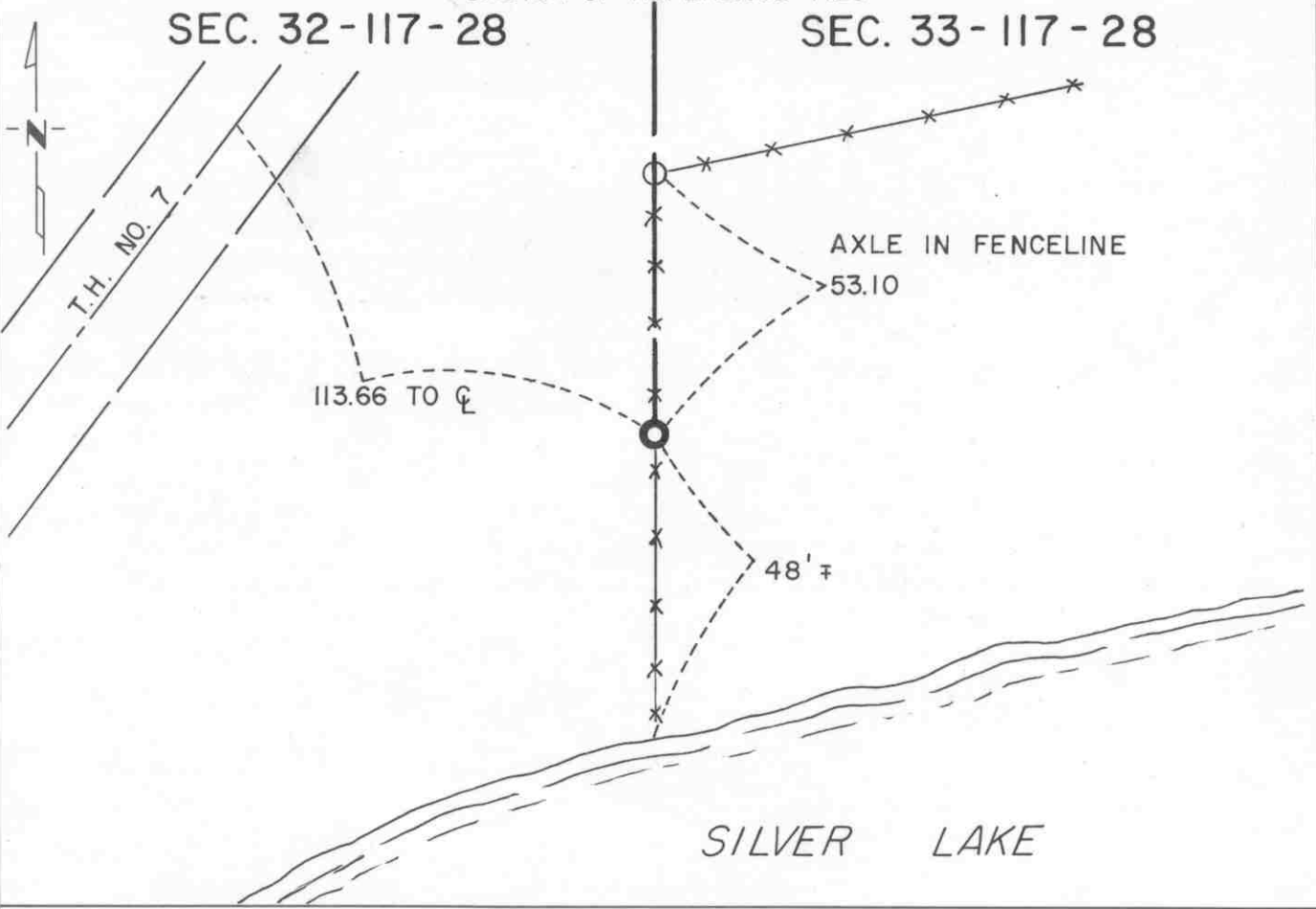
left monument as found,  lowered monument,  removed monument (explain)

On \_\_\_\_\_ placed a \_\_\_\_\_  
DATE

SKETCH OF REFERENCE TIES

SEC. 32-117-28

SEC. 33-117-28



Statement of evidence relative to this corner location is on back of page.

I hereby certify that this document and the data contained herein was prepared by me or under my direct supervision.

Robert Davis  
SIGNATURE

7-23-92  
DATE

Registration No. 11864

Land Surveyor,  Professional Engineer

County Surveyor,  County Engineer

OFFICE OF THE COUNTY RECORDER

County of McLeod

I hereby certify that this document was filed in the Co. Recorders office at 9 A. .M. on the 29<sup>th</sup> day of July A.D., 1992

County Recorder Armen Ostlie

By \_\_\_\_\_, Deputy

DOCUMENT NO. 246757

Statement of Evidence:

Witness Corner to Meander Corner Number 7 on  
the East Line of Section 32, T 117 N, R 28 W

- 1856 - The original Public Land Survey was completed by Oscar Taylor. The east quarter corner of the section could not be set because it fell in a lake. Meander Corner No. 7 was set on the east line of the section, north of a lake, and 43.82 chains north of the southeast corner of the section. A wood post was set to mark the corner with reference to two bearing trees.
- 1977 - Dickman Knutson, McLeod County Surveyor, set a 1/2" diameter iron pin on a north/south fence line north of Silver Lake as a witness corner to the meander corner. He had found an old axle on the line between the witness corner he set and the northeast corner of the section.
- 1979 - Dickman Knutson replaced the 1/2" diameter iron pin with a cast iron monument and set additional reference ties.
- 1991 - Matt Schlagel, Land Surveyor in Training with Mn/DOT, recovered the cast iron monument at the ground surface. He also found one of the reference ties set in 1979. The monument was located southeasterly of T.H. 7 Mile Point No. 149 plus 4348 feet in an old north/south fence line north of Silver Lake. It is more precisely located 112.66 ft. southerly of T.H. 7 P.O.T. 413+10.02 and is 13.83 ft. northerly of the computed position for Meander Corner No. 7.

The monument is accepted as a witness corner on the east line of the section because it fits a long standing occupation line and it is only 7.60 ft. east of a straight line between the southeast and northeast corners of the section.

For additional information, contact the Mn/DOT Surveys Section at Willmar, Mn 56201.

# CERTIFICATE OF LOCATION OF GOVERNMENT CORNER

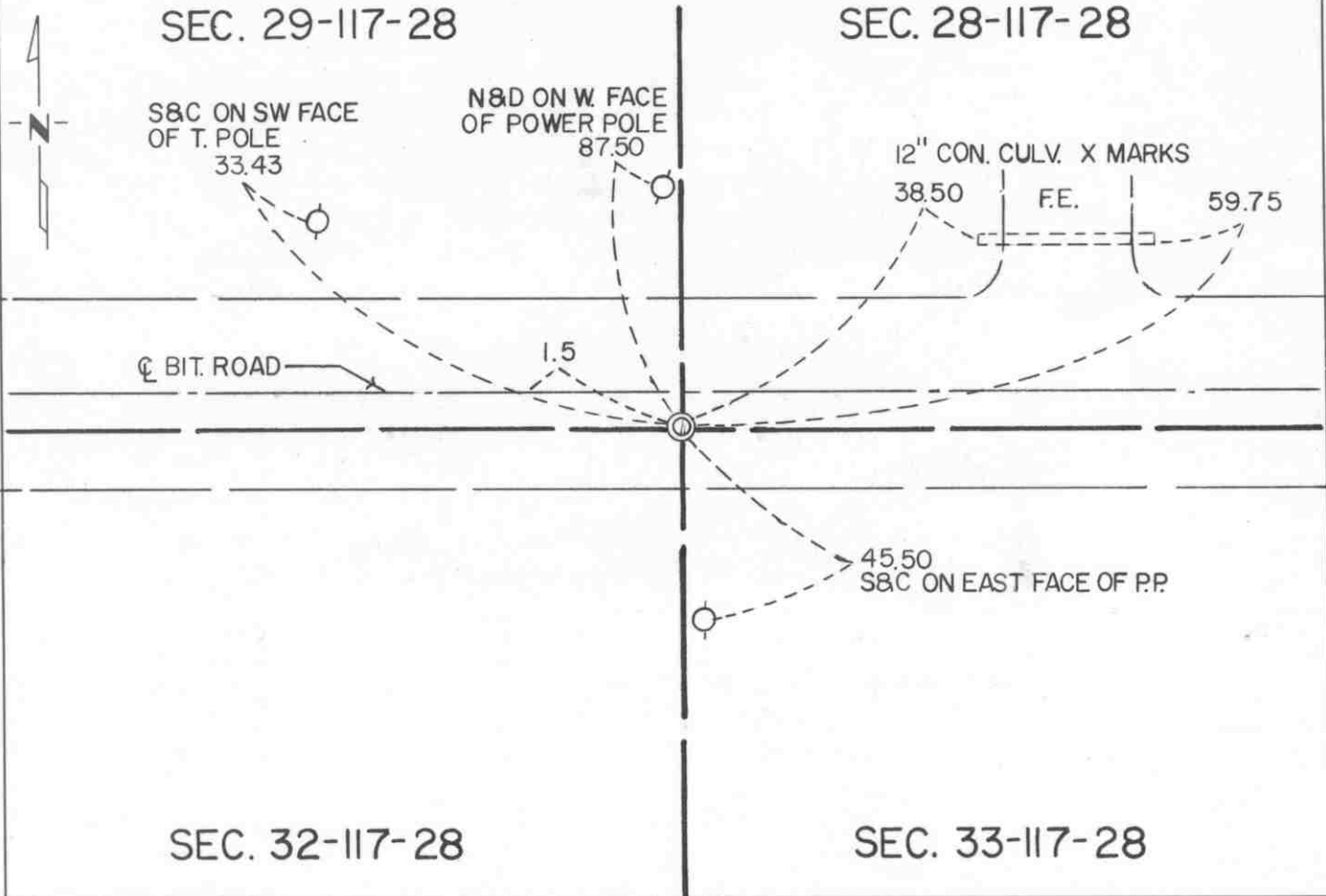
NORTHEAST Corner of Section 32, Township 117 N, Range 28 W, 5<sup>th</sup> P.M.

STATE OF MINNESOTA, County of MCLEOD

At the corner location shown on the sketch:

- On AUG. 6, 1991 found a CAST IRON MONUMENT ABOUT 3" BELOW  
DATE THE ROAD SURFACE
- left monument as found,  lowered monument,  removed monument (explain)
- On \_\_\_\_\_ placed a \_\_\_\_\_  
DATE

### SKETCH OF REFERENCE TIES



Statement of evidence relative to this corner location is on back of page.

I hereby certify that this document and the data contained herein was prepared by me or under my direct supervision.

Robert Jones 7-22-92  
SIGNATURE DATE

Registration No. 11864

- Land Surveyor,  Professional Engineer
- County Surveyor,  County Engineer

### OFFICE OF THE COUNTY RECORDER

County of McLeod

I hereby certify that this document was filed in the Co. Recorders office at 9 A. .M. on the 29<sup>th</sup> day of July A.D., 1992

County Recorder Harmon Estlie

By \_\_\_\_\_, Deputy

DOCUMENT NO. 246756

Statement of Evidence:

Northeast Corner Section 32, T 117 N, R 28 W

- 1856 - The original Public Land Survey was completed by Oscar Taylor. A wood post was set to mark the corner with reference to four bearing trees.
- 1937 - The Minnesota Highway Department right of way map from this era shows the corner to be 2185.4 feet northerly of the T.H. 7 P.O.T. 414+06.8. The angle between the section line and the centerline of the highway is shown to be 48 degrees 05 minutes as measured from north to northeast.
- 1972 - Dickman Knutson, McLeod County Surveyor, found a 12" by 12" by 10" stone 4 ft. below the road surface. He stated in his notes that E. L. Higgins, McLeod County Surveyor, showed a stone at the corner in 1921. A spike was set over the stone and reference ties were made.
- 1976 - Dickman Knutson recovered the spike and set a cast iron monument to mark the corner. It was located 1.5 ft. south of the centerline of an east/west road and in line with field divisions north and south.
- 1991 - R. C. Jones, Registered Land Surveyor with Mn/DOT, recovered the cast iron monument about 3" below the road surface and located as shown in Knutson's 1976 notes.

The cast iron monument is accepted as the corner location because it nearly fits long standing occupation lines, it perpetuates the location of a monument that has been regarded as the corner for at least 70 years, and it is 2185.67 ft. northerly of T.H. 7 P.O.T. 414+06.8, which very nearly fits the right of way map location.

For additional information, contact the Mn/DOT Surveys Section at Willmar, Mn 56201.

# CERTIFICATE OF LOCATION OF GOVERNMENT CORNER

NORTH QUARTER Corner of Section 32, Township 117 N, Range 28 W, 5<sup>th</sup> P.M.

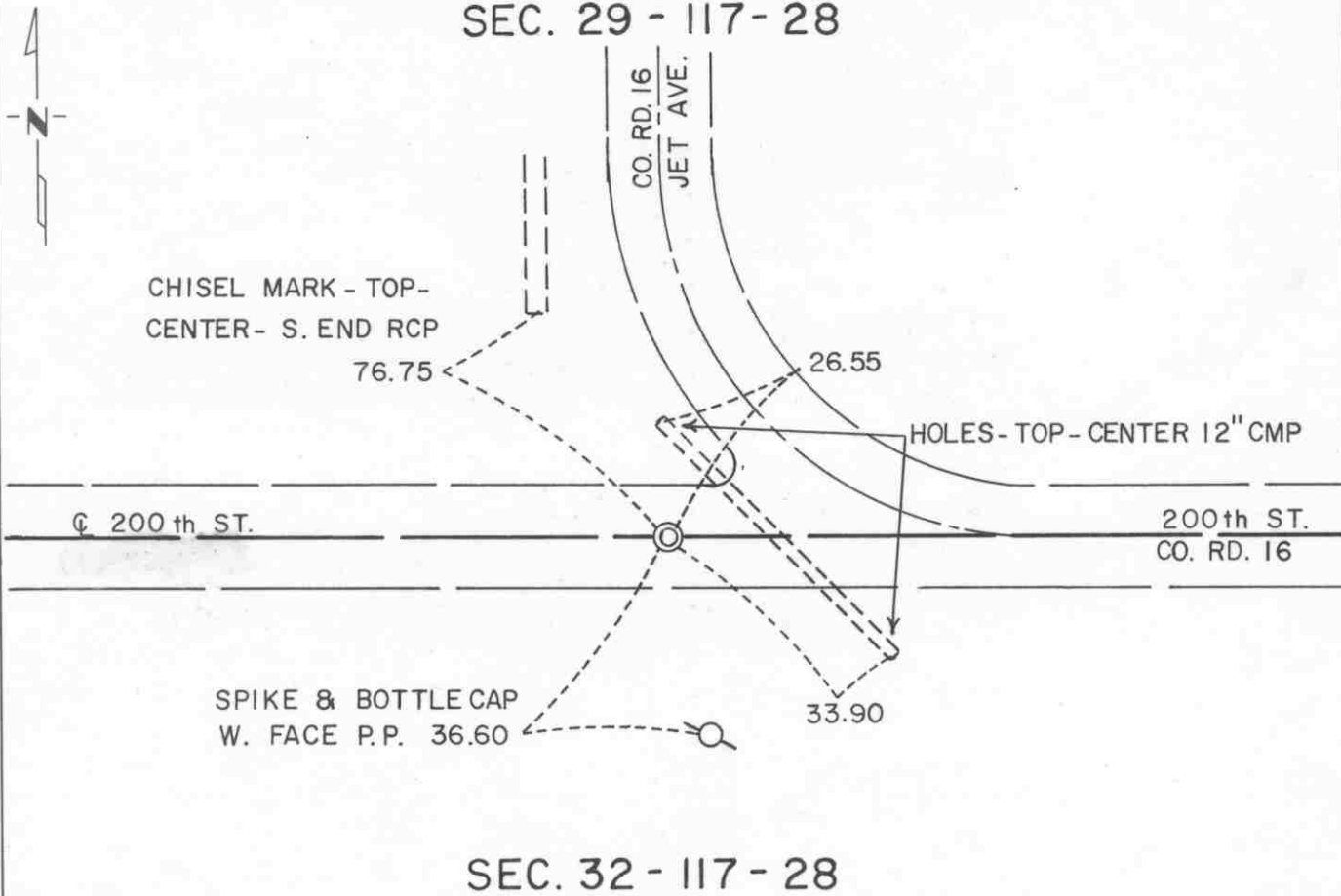
STATE OF MINNESOTA, County of MCLEOD

At the corner location shown on the sketch:

- On AUG. 6, 1991 found a 1" DIAMETER IRON PIN ABOUT 4" BELOW THE ROAD SURFACE  
DATE
- left monument as found,  lowered monument,  removed monument (explain)
- On AUG. 6, 1991 placed a RAILROAD SPIKE DIRECTLY OVER THE IRON PIN SO THAT THE TOP OF THE SPIKE IS ABOUT 3" BELOW THE SURFACE  
DATE

SKETCH OF REFERENCE TIES

## SEC. 29 - 117 - 28



## SEC. 32 - 117 - 28

Statement of evidence relative to this corner location is on back of page.

I hereby certify that this document and the data contained herein was prepared by me or under my direct supervision.

Robert Young  
SIGNATURE

7-22-92  
DATE

Registration No. 11864

- Land Surveyor,  Professional Engineer
- County Surveyor,  County Engineer

OFFICE OF THE COUNTY RECORDER  
County of McLeod

I hereby certify that this document was filed in the Co. Recorders office at 9 A. .M. on the 29<sup>th</sup> day of July A.D., 1992

County Recorder Armen Rutlie

By \_\_\_\_\_, Deputy

DOCUMENT NO. 246759

- 1856 - The original Public Land Survey was completed by Oscar Taylor. A wood post was set to mark the corner with reference to two bearing trees.
- 1972 - Dickman Knutson, McLeod County Surveyor, found a 6" by 8" by 12" stone with a wood stake next to it about 3.5 ft. below the road surface. His notes state that E. L. Higgins, McLeod County Surveyor, showed a stone at the corner in 1927. A cast iron monument was set above the stone and reference ties were made. It was located at the centerline of an east/west road and at the southerly extension of the centerline of a road to the north.
- 1991 - R. C. Jones, Registered Land Surveyor with Mn/DOT, found a 1" diameter iron pin about 14" below the road surface. A railroad spike was set above the found pin so that it is about 3" below the road surface. It appears that the east/west road connection had been rebuilt recently and the cast iron monument had apparently been destroyed in the process.

The found iron pin is accepted as the corner location because it fits the location shown in Knutson's 1972 survey notes, it very nearly fit two of the reference ties shown in those notes, it fits long standing occupation lines, and it perpetuates the position of a monument that has been regarded as the corner location for at least 64 years.

For additional information, contact the Mn/DOT Surveys Section at Willmar, Mn 56201.

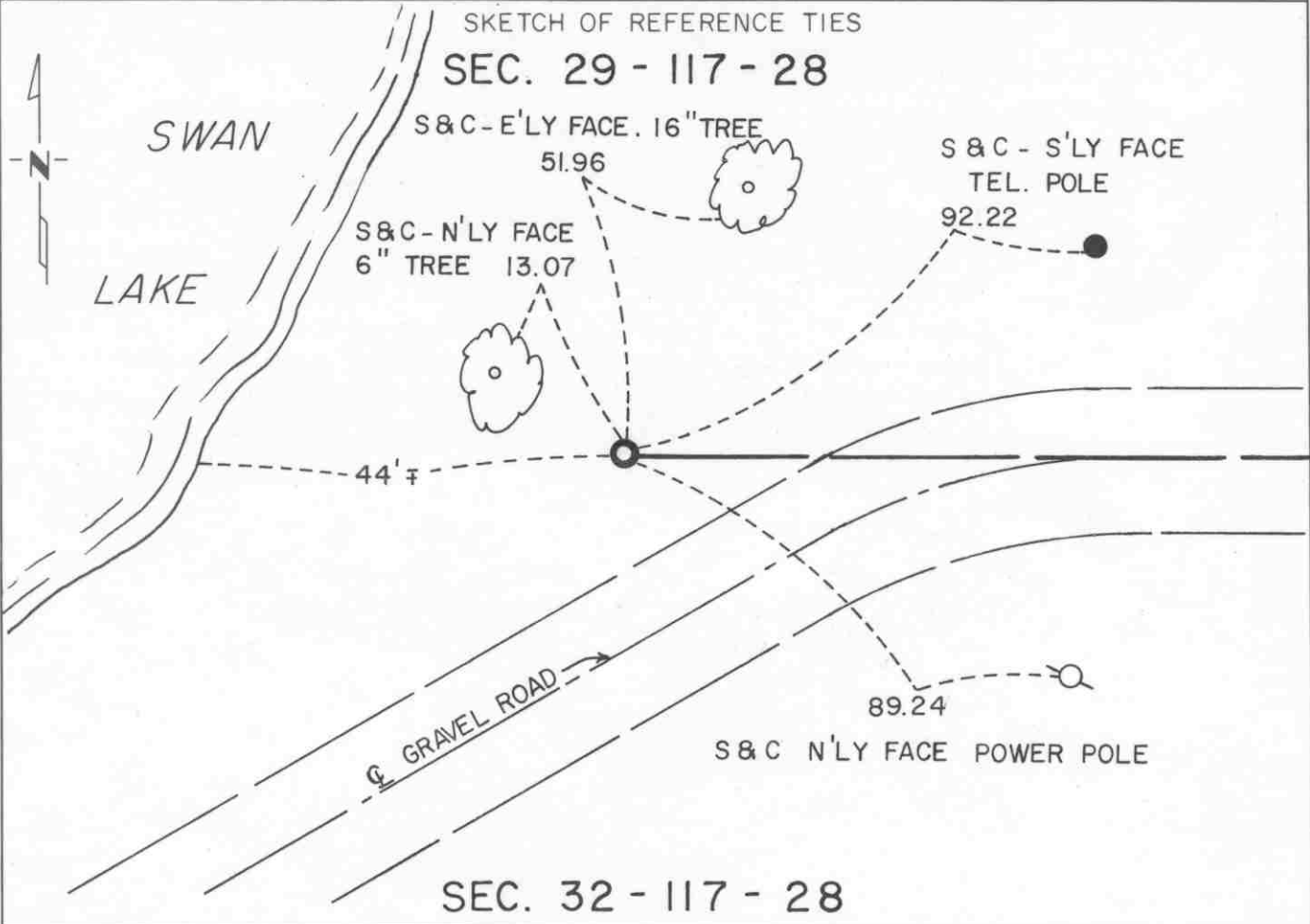
# CERTIFICATE OF LOCATION OF GOVERNMENT CORNER

WITNESS CORNER TO M.C. No. 20  
 ON THE NORTH LINE \_\_\_\_\_ of Section 32, Township 117 N, Range 28 W, 5<sup>th</sup> P.M.

STATE OF MINNESOTA, County of McLEOD

At the corner location shown on the sketch:

- On FEB, 1991 found a CAST IRON MONUMENT ABOUT 1" BELOW  
DATE THE GROUND SURFACE
- left monument as found,  lowered monument,  removed monument (explain)
- On \_\_\_\_\_ placed a \_\_\_\_\_  
DATE



Statement of evidence relative to this corner location is on back of page.

I hereby certify that this document and the data contained herein was prepared by me or under my direct supervision.

Robert Gaus  
SIGNATURE 7-23-92  
DATE

Registration No. 11864  
 Land Surveyor,  Professional Engineer  
 County Surveyor,  County Engineer

OFFICE OF THE COUNTY RECORDER  
 County of McLeod

I hereby certify that this document was filed in the Co. Recorders office at 9 A. .M. on the 29<sup>th</sup> day of July A.D., 1992

County Recorder Armen Ostlie  
 By \_\_\_\_\_, Deputy  
 DOCUMENT NO. 246760



Statement of Evidence:

Witness Corner to Meander Corner Number 20 on  
the North Line of Section 32, T 117 N, R 28 W

- 1856 - The original Public Land Survey was completed by Oscar Taylor. The northwest corner of the section could not be set because it fell in a lake. Meander Corner No. 20 was set on the north line of the section a distance of 60.53 chains west of the northeast corner of the section on the southeasterly side of a lake. A wood post was set to mark the corner with reference to two bearing trees.
- 1980 - Willard Pellinen, McLeod County Surveyor, found a 2" diameter iron pipe on the east shore of Swan Lake. It was located 1227.52 ft. west of the north quarter corner of the section. He replaced the iron pipe with a cast iron monument. It was on the westerly extension of the centerline of a road to the east and 132.19 ft. east of the computed location of the meander corner.
- 1991 - A Mn/DOT survey crew (Gene East, crew chief) found the cast iron monument about 1" below the surface.

The cast iron monument is accepted as a witness corner to the meander corner on the north line of the section because it fits a long standing occupation line and it is the perpetuation of a found monument, which has probably been regarded as marking the location of the section line for quite a number of years.

For additional information, contact the Mn/DOT Surveys Section at Willmar, Mn 56201.

# CERTIFICATE OF LOCATION OF GOVERNMENT CORNER

SOUTH QUARTER Corner of Section 32, Township 117N, Range 28W, 5<sup>th</sup> P.M.

STATE OF MINNESOTA, County of MCLEOD

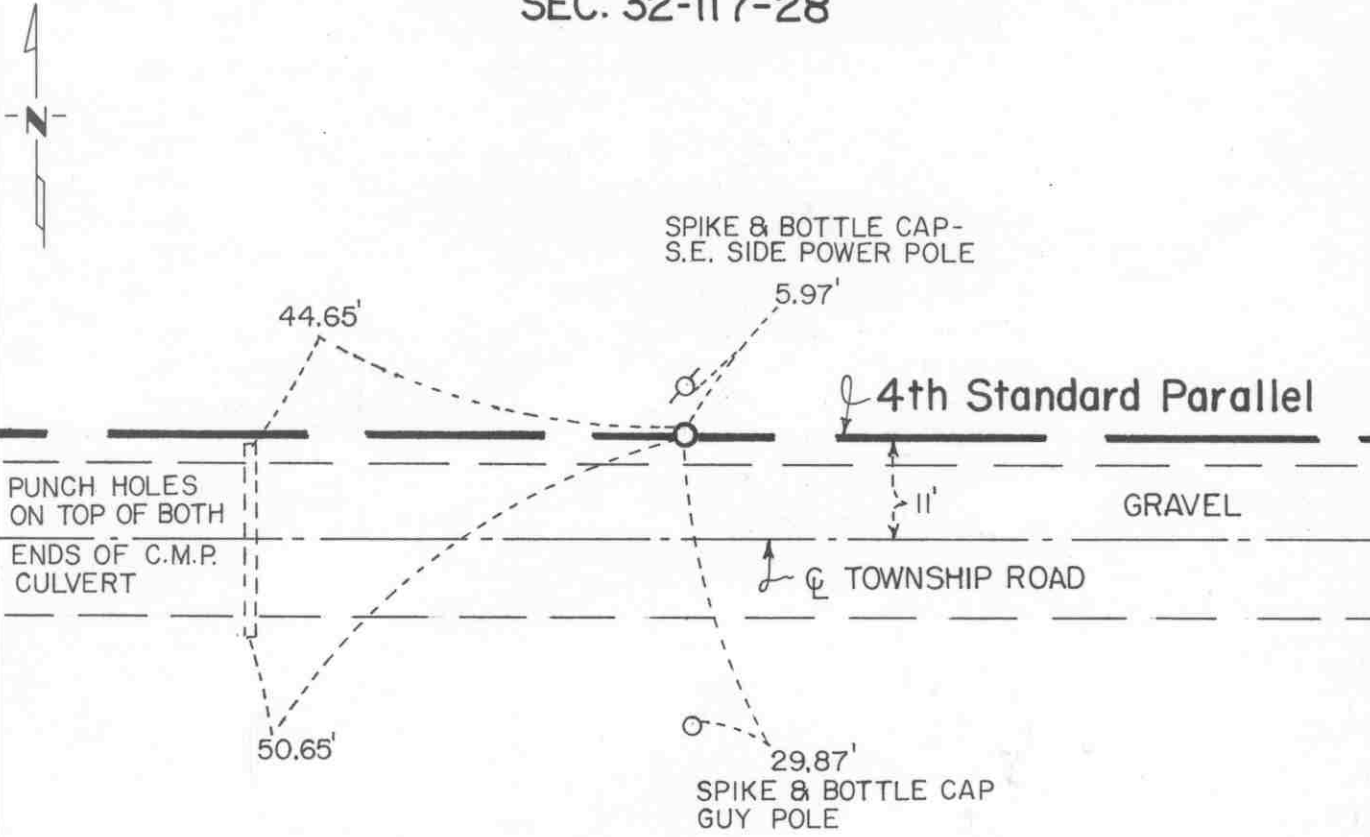
At the corner location shown on the sketch:

On FEB. 1991 found a CAST IRON MONUMENT ABOUT 3" BELOW THE  
DATE BOTTOM OF THE ROAD DITCH

left monument as found,  lowered monument,  removed monument (explain)

On \_\_\_\_\_ placed a \_\_\_\_\_  
DATE

## SKETCH OF REFERENCE TIES SEC. 32-117-28



## SEC. 5-116-28

Statement of evidence relative to this corner location is on back of page.

I hereby certify that this document and the data contained herein was prepared by me or under my direct supervision.

Robert Jones  
SIGNATURE

7-24-92  
DATE

Registration No. 11864

- Land Surveyor,  Professional Engineer
- County Surveyor,  County Engineer

OFFICE OF THE COUNTY RECORDER

County of McLeod

I hereby certify that this document was filed in the Co. Recorders office at 9 A. .M. on the 29<sup>th</sup> day of July A.D., 1892

County Recorder Marion Ostlie

By \_\_\_\_\_, Deputy

DOCUMENT NO. 246761

Statement of Evidence:

South Quarter Corner Section 32, T 117 N, R 28 W

- 1855 - The original Public Land Survey of the Fourth Standard Parallel was completed by John Ryan. A wood post was set to mark the corner with reference made to two bearing trees.
- 1937 - The Minnesota Highway Department right of way map depicts the corner to be 660 feet southerly of T.H. 7 P.O.T. 378+80 as scaled on the map.
- 1968 - Dickman Knutson, McLeod County Surveyor, found a 1" diameter iron pin at the intersection of fences east and north and set a cast iron monument to replace it.
- 1991 - A Mn/DOT survey crew (Gene East, crew chief) found the cast iron monument at the ground surface. It is located 638.78 feet southerly of T.H. 7 P.O.T. 378+80.00 and 11 feet north of the centerline of an east/west road.

The cast iron monument is accepted as the corner location because it fits the right of way map location within reason, it is 4.35 feet west and 15.72 feet south of the lost location, it fit old occupation lines that have since been removed, and it presently fits a pole line to the north which is probably along the old fence line location.

For additional information, contact the Mn/DOT Surveys Section at Willmar, Mn 56201.

# CERTIFICATE OF LOCATION OF GOVERNMENT CORNER

SOUTHEAST Corner of Section 32, Township 117 N, Range 28 W, 5<sup>th</sup> P.M.

STATE OF MINNESOTA, County of McLEOD

At the corner location shown on the sketch:

On FEB. 1991 found a CAST IRON MONUMENT AT GROUND SURFACE  
DATE

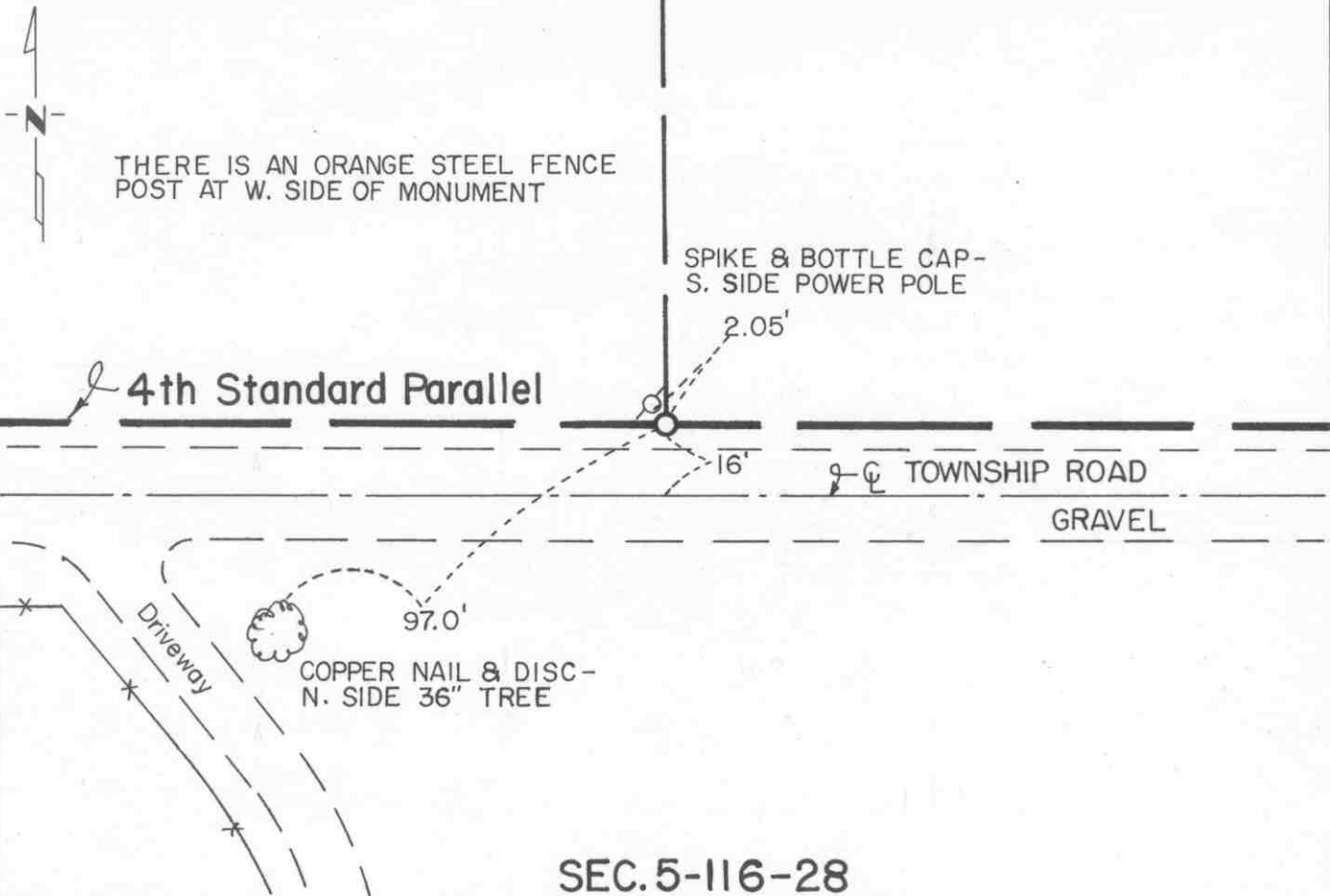
left monument as found,  lowered monument,  removed monument (explain)

On \_\_\_\_\_ placed a \_\_\_\_\_  
DATE

**SEC. 32-117-28**

SKETCH OF REFERENCE TIES

**SEC. 33-117-28**



**SEC. 5-116-28**

Statement of evidence relative to this corner location is on back of page.

I hereby certify that this document and the data contained herein was prepared by me or under my direct supervision.

Robert C. Jones  
SIGNATURE

7-24-92  
DATE

Registration No. 11864

Land Surveyor,  Professional Engineer

County Surveyor,  County Engineer

OFFICE OF THE COUNTY RECORDER

County of McLeod

I hereby certify that this document was filed in the Co. Recorders office at 9 A. .M. on the 29<sup>th</sup> day of July A.D., 1992

County Recorder Armen Ostlie

By \_\_\_\_\_, Deputy

DOCUMENT NO. 246758

Statement of Evidence:

Southeast Corner Section 32, T 117 N, R 28 W

- 1855 - The original Public Land Survey of the Fourth Standard Parallel was completed by John Ryan. A wood post was set to mark the corner with reference made to two bearing trees.
- 1937 - The Minnesota Highway Department right of way map depicted the corner to be about 3069 feet southerly of T.H. 7 P.O.T. 414+06.8 as scaled on the map.
- 1968 - Dickman Knutson, McLeod County Surveyor, found an iron pin at the corner of fences north and east and set a cast iron monument to replace it. It was located from 15 to 30 north of the centerline of an east/west road as depicted in the survey notes.
- 1991 - A Mn/DOT survey crew (Gene East, crew chief) found a cast iron monument at the ground surface. It was located 3006.10 feet southerly of T.H. 7 P.O.T. 414+06.8, it is 16 feet north of the centerline of an east/west road, and it is 822.98 feet west of the northeast corner of Section 5-116-28.

The cast iron monument is accepted as the corner location because it did fit old occupation lines which have since been removed, it is within 1.5 feet of fitting the government distance from the northeast corner of said Section 5, and it fits the right of way map location in an east/west direction.

For additional information, contact the Mn/DOT Surveys Section at Willmar, Mn 56201.

# CERTIFICATE OF LOCATION OF GOVERNMENT CORNER

Witness Corner to Meander Corner No.6

on the East line \_\_\_\_\_ of Section 33, Township 117 N, Range 28 W, 5th P.M.

STATE OF MINNESOTA, County of McLeod

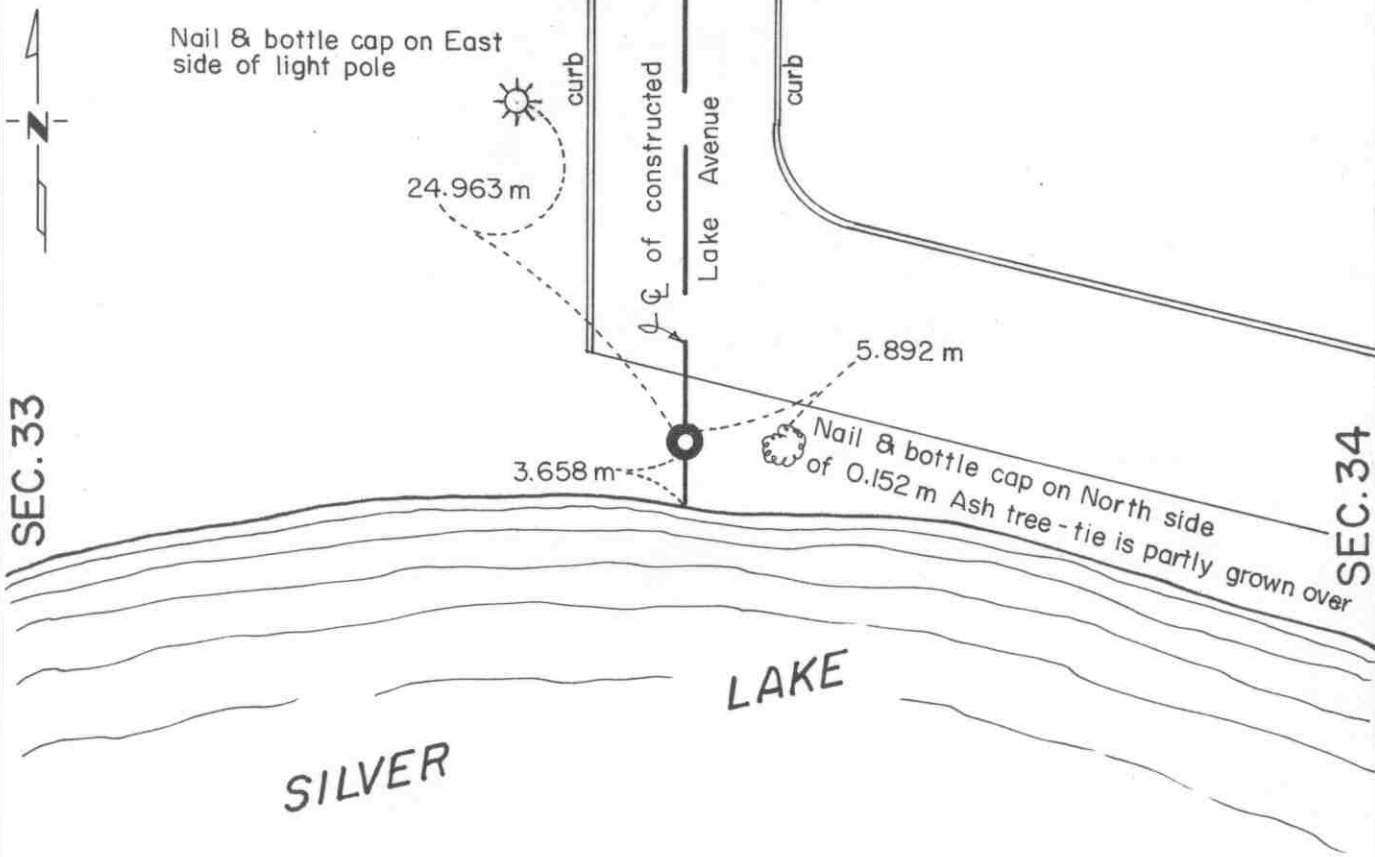
At the corner location shown on the sketch:

On Dec. 12, 1997 found a cast iron monument  
DATE

left monument as found,  lowered monument,  removed monument (explain)

On \_\_\_\_\_ placed a \_\_\_\_\_  
DATE

SKETCH OF REFERENCE TIES



Statement of evidence relative to this corner location is on back of page.

I hereby certify that this document and the data contained herein was prepared by me or under my direct supervision.

Robert J. Jones  
SIGNATURE

Dec. 15, 1997  
DATE

Registration No. 11864

Land Surveyor,  Professional Engineer

County Surveyor,  County Engineer

OFFICE OF THE COUNTY RECORDER

County of McLeod

I hereby certify that this document was filed in the Co. Recorders office at 8:00 a. .M. on the 23<sup>rd</sup> day of December A.D., 19 97

County Recorder Carmen Estlie Mulder

By Jan Petrick, Deputy

DOCUMENT NO. 283188

Statement of Evidence:

Witness Corner to Meander Corner No. 6  
on the east line of Section 33-117-28  
on the north shore of Silver Lake

- 1855- The original Public Land Survey was completed by Oscar Taylor. The east quarter corner of the section fell in the lake so a wood post was set on the north shore of the lake to mark the meander corner. Two bearing trees were referenced to. The meander corner was set 45.23 chains north of the southeast corner of the section.
- 1979- Willard Pellinen, McLeod County Surveyor, set a cast iron monument as a reference to the east quarter corner of the section. The distance from this monument to said quarter corner was stated to be 164.17 feet.
- 1990- Willard Pellinen recovered the cast iron monument and set new reference ties because the old ones had been destroyed.
- 1991- A Mn/DOT survey crew (Gene East, crew chief) recovered the cast iron monument and tied it into the McLeod County Coordinate System.

When the position of Meander Corner No. 6 is computed by pro-rating the government chainage, the found monument is 9.774 m (32.068 feet) north of where the meander corner was theoretically set. It is also 116.469 m (382.116 feet) north of the split between section corners and 0.034m (0.111 feet) east of the line between section corners.

- 1997- R. C. Jones, Registered Land Surveyor with Mn/DOT, recovered the cast iron monument and two of the reference ties. No new ties were set.

The cast iron monument is accepted as being a witness corner to Meander Corner No. 6 rather than a witness corner to the East Quarter Corner of Section 33. The quarter corner was not set in the original government survey. Being that the entire length of the east/west quarter line in this section is in the lake, it appears to be pointless to refer to the quarter corner.

For more information, contact the Mn/DOT Surveys Section at Willmar, Mn 56201.

# CERTIFICATE OF LOCATION OF GOVERNMENT CORNER

Northeast Corner of Section 33, Township 117 N, Range 28 W, 5th P.M.

STATE OF MINNESOTA, County of McLeod

At the corner location shown on the sketch:

On Dec. 12, 1997 found a 1/2" diameter iron pipe at surface of road  
DATE

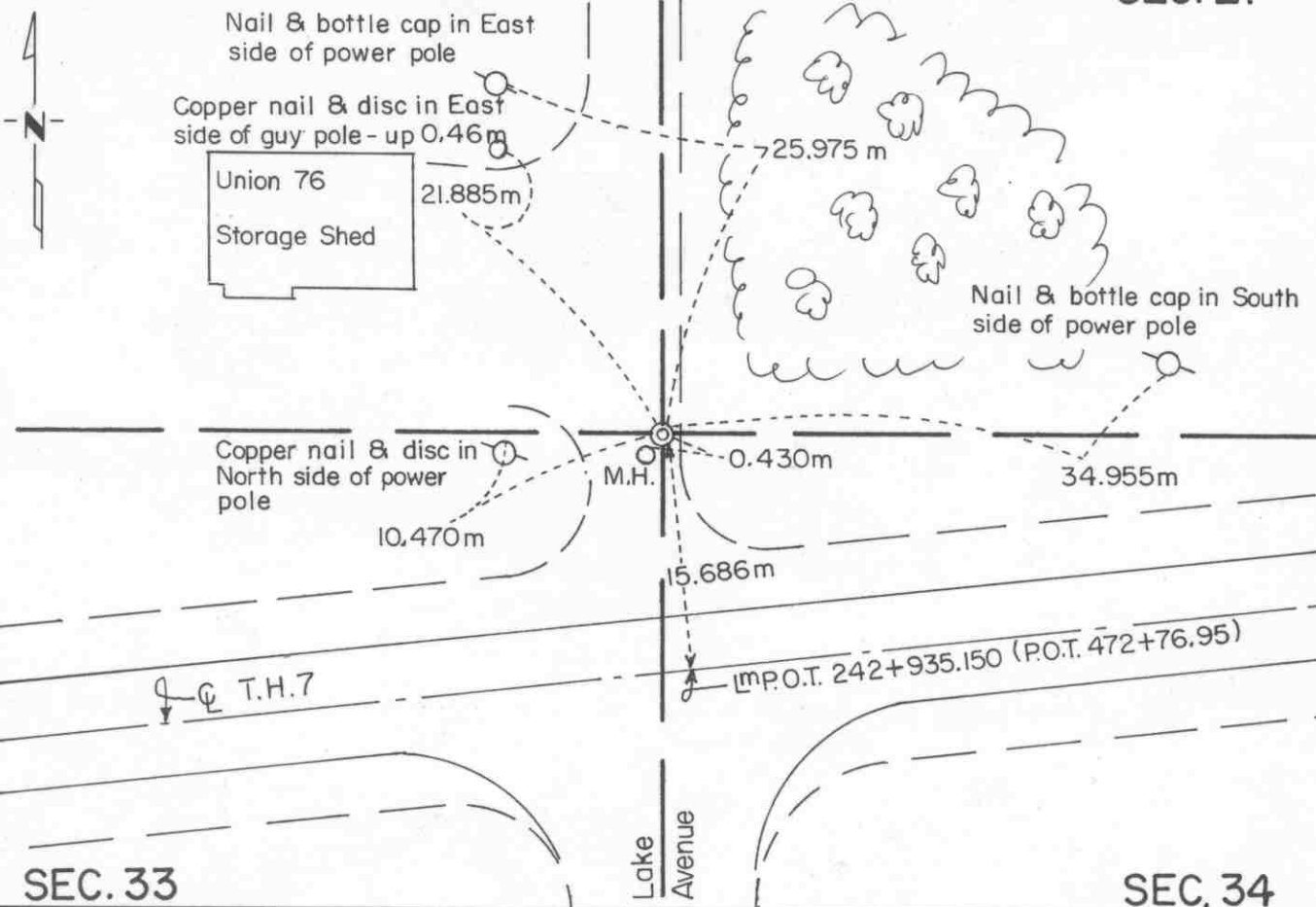
left monument as found,  lowered monument,  removed monument (explain)

On \_\_\_\_\_ placed a \_\_\_\_\_  
DATE

SEC. 28

SKETCH OF REFERENCE TIES

SEC. 27



Statement of evidence relative to this corner location is on back of page.

I hereby certify that this document and the data contained herein was prepared by me or under my direct supervision.

Robert Quins  
SIGNATURE

Dec. 16, 1997  
DATE

Registration No. 11864

Land Surveyor,  Professional Engineer

County Surveyor,  County Engineer

OFFICE OF THE COUNTY RECORDER

County of McLeod

I hereby certify that this document was filed in the Co. Recorders office at 8:00 a. .M. on the 22<sup>nd</sup> day of December A.D., 19 97

County Recorder Carmen Ontlie Mulder

By Jan Petrick, Deputy

DOCUMENT NO. 283189



Statement of Evidence:

Northeast Corner Section 33, T 117 N, R 28 W

- 1856- The original Public Land Survey was completed by Oscar Taylor. He set a wood post in a marsh to mark the corner and referenced it to four bearing trees.
- 1976- McCombs, Knutson Associates (Dickman Knutson, McLeod County Surveyor) found a 3/4 inch diameter iron pipe. The location of the pipe fit surveys done in 1910 and 1930 by E. L. Higgins and also fits monumentation of plats in the Village of Silver Lake.
- Later in the year, Knutson replaced the found iron pipe with a McLeod County cast iron monument and set reference ties.
- 1989- Willard Pellinen, McLeod County Surveyor, recovered the cast iron monument and the reference ties in good condition. In his opinion, the iron pipe perpetuated the the correct location of the section corner.
- 1990- Willard Pellinen found that the cast iron monument had been destroyed by road construction. A DNR monument was found 0.15 feet north and 0.25 feet west of the corner. A 1/2 inch diameter iron pipe was set to mark the corner by using the reference ties set by Knutson. The corner is 1.41 feet northeast of the northeast edge of the top ring of a manhole.
- 1991- A Mn/DOT survey crew (Gene East, crew chief) recovered the iron pipe and tied it into the McLeod County Coordinate System.
- 1997- R. C. Jones, Registered Land Surveyor with Mn/DOT, recovered the iron pipe and two of the four reference ties. Two new ties were set.

The iron pipe is accepted as the corner location because it fits old surveys and the platting in the town of Silver Lake.

For further information, contact the Mn/DOT Surveys Section at Willmar, Mn 56201.

# CERTIFICATE OF LOCATION OF GOVERNMENT CORNER

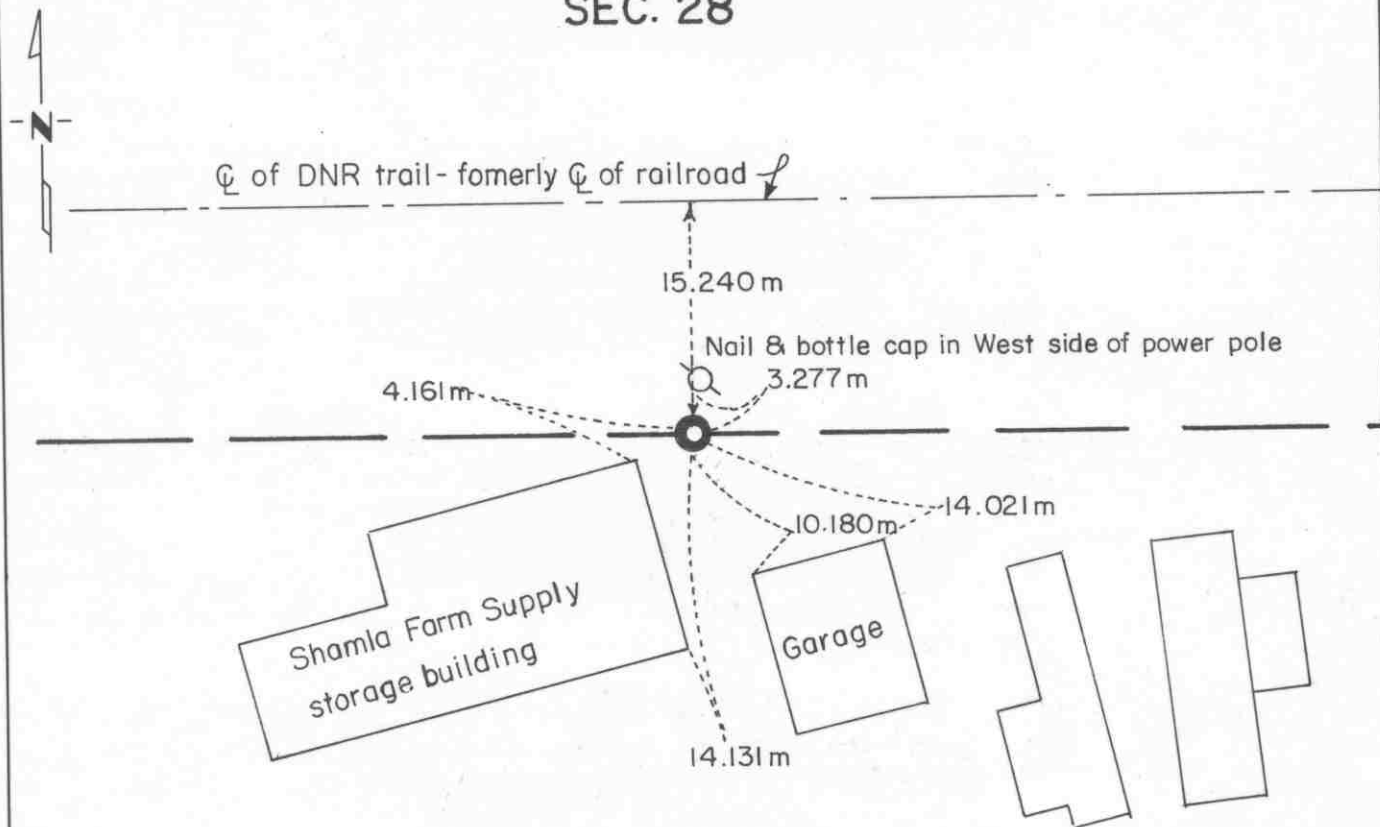
North Quarter \_\_\_\_\_ Corner of Section 33, Township 117 N, Range 28 W, 5th P.M.

STATE OF MINNESOTA, County of McLeod

At the corner location shown on the sketch:

- On Dec. 12, 1997 found a cast iron monument about 0.03m below ground surface  
DATE
- left monument as found,  lowered monument,  removed monument (explain)
- On \_\_\_\_\_ placed a \_\_\_\_\_  
DATE

## SKETCH OF REFERENCE TIES SEC. 28



## SEC. 33

Statement of evidence relative to this corner location is on back of page.

I hereby certify that this document and the data contained herein was prepared by me or under my direct supervision.

Robert Jones  
SIGNATURE

Dec. 16, 1997  
DATE

Registration No. 11864

- Land Surveyor,  Professional Engineer
- County Surveyor,  County Engineer

OFFICE OF THE COUNTY RECORDER  
County of McLeod

I hereby certify that this document was filed in the Co. Recorders office at 8:00 a. .M. on the 22<sup>nd</sup> day of December A.D., 19 97

County Recorder Carman Arlie Mulder

By Jan Petrick, Deputy

DOCUMENT NO. 283190

Statement of Evidence:

North Quarter Corner Section 33, T 117 N, R 28 W

- 1856- The original Public Land Survey was completed by Oscar Taylor. A wood post was set to mark the corner and reference was made to two bearing trees.
- 1899- E. L. Higgins, McLeod County Surveyor, found an oak stake at the corner and his notes show that the distance from this corner to the northwest corner of the section is 2614.55 feet.
- 1972- McCombs-Knutson Associates (Dickman Knutson, McLeod County Surveyor) found an old rotted wood stake 1 foot below the ground surface. The stake was 50 feet south of the centerline of the railroad tracks as shown on the railroad right of way map. It was also in line with a fence line running north which was located north of the railroad. The wood stake was replaced with a cast iron monument and reference ties were set.
- 1976- Willard Pellinen, McLeod County Surveyor, measured the distance from this corner to the northwest corner of the section and found that it was 2614.54 feet.
- 1990- Willard Pellinen recovered the cast iron monument in good condition. All the reference ties had been destroyed so new ones were set. In his opinion, the wood stake perpetuated the true location of the quarter corner.
- 1991- A Mn/DOT survey crew (Gene East, crew chief) recovered the cast iron monument and tied it into the McLeod County Coordinate System.
- 1997- R. C. Jones, Registered Land Surveyor with Mn/DOT, recovered the cast iron monument about 0.03 m below the ground surface. All five reference ties were also recovered.

The cast iron monument is accepted as the corner position because it fits old survey distances, the railroad right of way map, and an old occupation line to the north. It is 1.561 m west of the split between section corners and it is 7.761 m north of the line between section corners. The record evidence appears to indicate that the original location of the corner has been perpetuated through the years.

For additional information, contact the Mn/DOT Surveys Section at Willmar, Mn 56201.

(also 33-117-28)

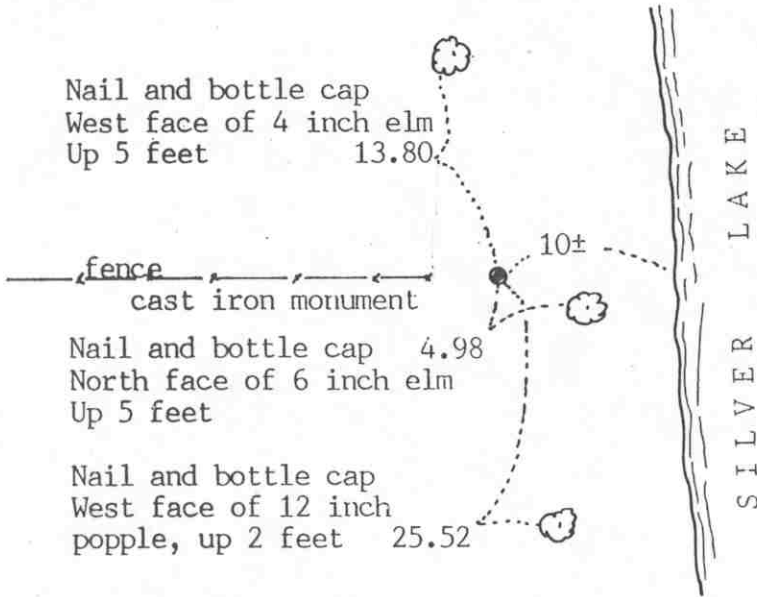
WITNESS \_\_\_\_\_ corner, Section 4, Township 116 North, Range 28 West

# Certificate of Location of Government Corner

## SKETCH OF REFERENCE TIES (NO SCALE)

SECTION 33, T. 117, R. 28

Computed meander corner is 1.52 feet east of this witness corner on easterly extension of line from SW cor Sec 33 .  
Angle at MC is  $177^{\circ}07'16''$  on south side of line to computed MC on east side of Silver Lake.



SECTION 4, T. 116, R. 28

Statement of evidence relative to this corner location on sheet 2

I hereby certify that this document was prepared by me or under my direct supervision.

Willard Pellinen  
Willard Pellinen  
McLeod County Surveyor  
License No. 9626

Date Oct. 23, 1991

OFFICE OF THE COUNTY RECORDER  
MCLEOD COUNTY, MINNESOTA.

I hereby certify that this document was filed in this office at 9 o'clock A. M. on the 9th day of January, 1992.

Armen Botlie, County Recorder

By \_\_\_\_\_, Deputy

Document No. 242763 NO FEE

(also 33-117-28)

Sheet 2 of 2 sheets

Witness corner, Section 4, Township 117<sup>116</sup> North, Range 28 West

## Certificate of Location of Government Corner

Witness corner to Meander Corner No. 8, along south line of Section 33, west of Silver Lake. North line of Sec. 4)

1855. John Ryan of the General Land Office set a meander post on the west side of Silver Lake.

1967. McCombs Knutson Associates (Dickman Knutson, county surveyor) found an iron monument and replaced it with a McLeod County cast iron monument and took reference ties.

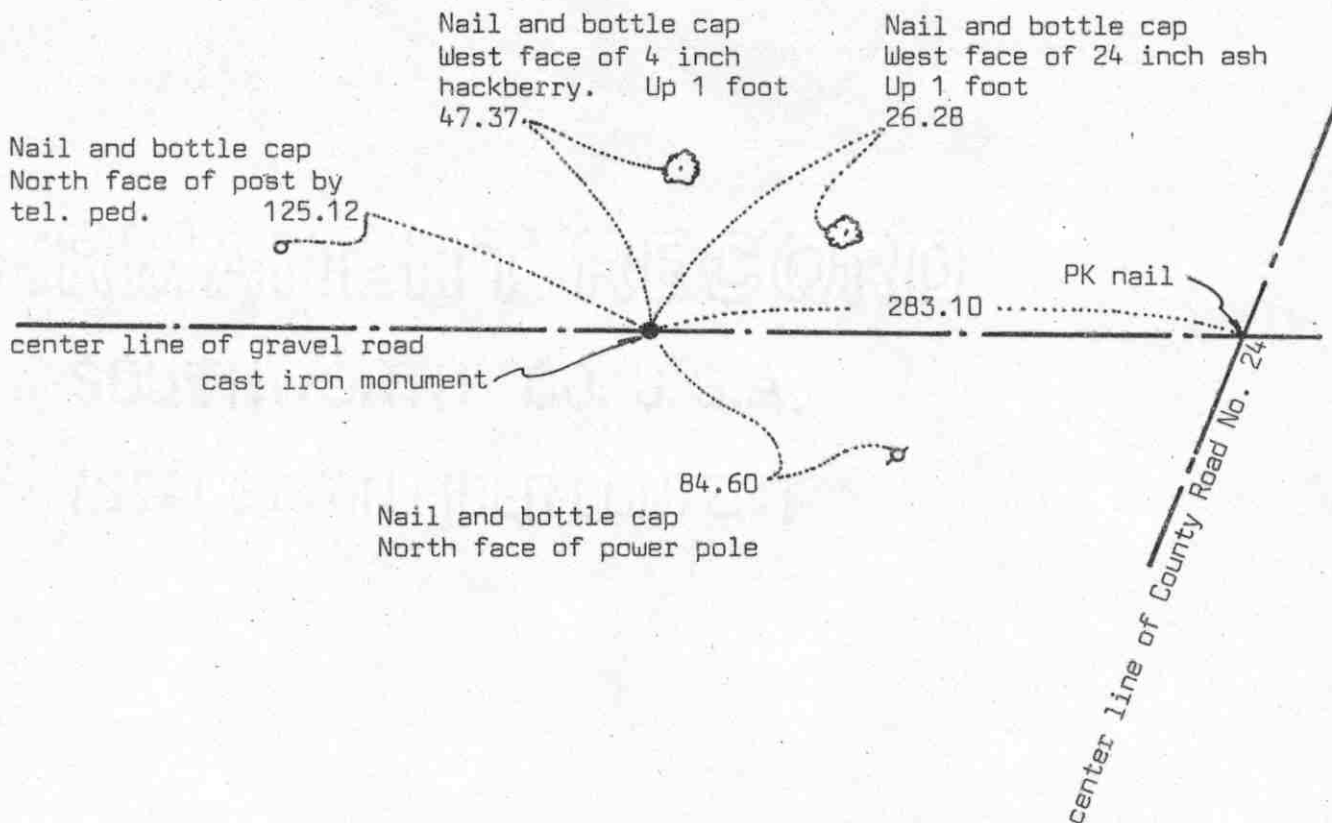
June 15, 1987. We measured the south line of Section 33 and found the monument to be 1.52 feet west of the computed location of Meander corner No. 8.

January 25, 1991. We found the monument in good condition 2 inches below the surface but all the old reference ties had been destroyed. We took new reference ties.

# Certificate of Location of Government Corner



SKETCH OF REFERENCE TIES  
(NO SCALE)



Statement of evidence relative to this corner location on sheet 2

I hereby certify that this document was prepared by me or under my direct supervision.

Willard Pellinen

Willard Pellinen  
McLeod County Surveyor  
License No. 9626

Date 4/4/90

OFFICE OF THE COUNTY RECORDER  
MCLEOD COUNTY, MINNESOTA.

I hereby certify that this document was filed in this office at 4 o'clock P.M. on the 2nd day of May, 1990.

Carmen Postlie, County Recorder

By \_\_\_\_\_, Deputy

Document No. 233093

## Certificate of Location of Government Corner

1855. This corner was originally established by John Ryan of the General Land Office. He set a post and had reference ties to 2 bearing trees.

November, 1968. McCombs Knutson Associates, Dickman Knutson, county surveyor, found an angle iron down 2 feet below the road surface. Knutson set a cast iron monument and took reference ties.

May 8, 1975. MKA found the monument in good condition and the reference ties good.

March 23, 1989. We found the cast iron monument in good condition and found a 4 inch diameter iron pipe along the south side of the monument. No reference ties remaining so we took reference ties.

We feel the angle iron found by Knutson and later the cast iron monument set by him have perpetuated the correct location of the section corner. We don't know when or who set the 4 inch iron pipe beside the monument.



MEANDER

corner, Section 34, Township 117 North, Range 28 West

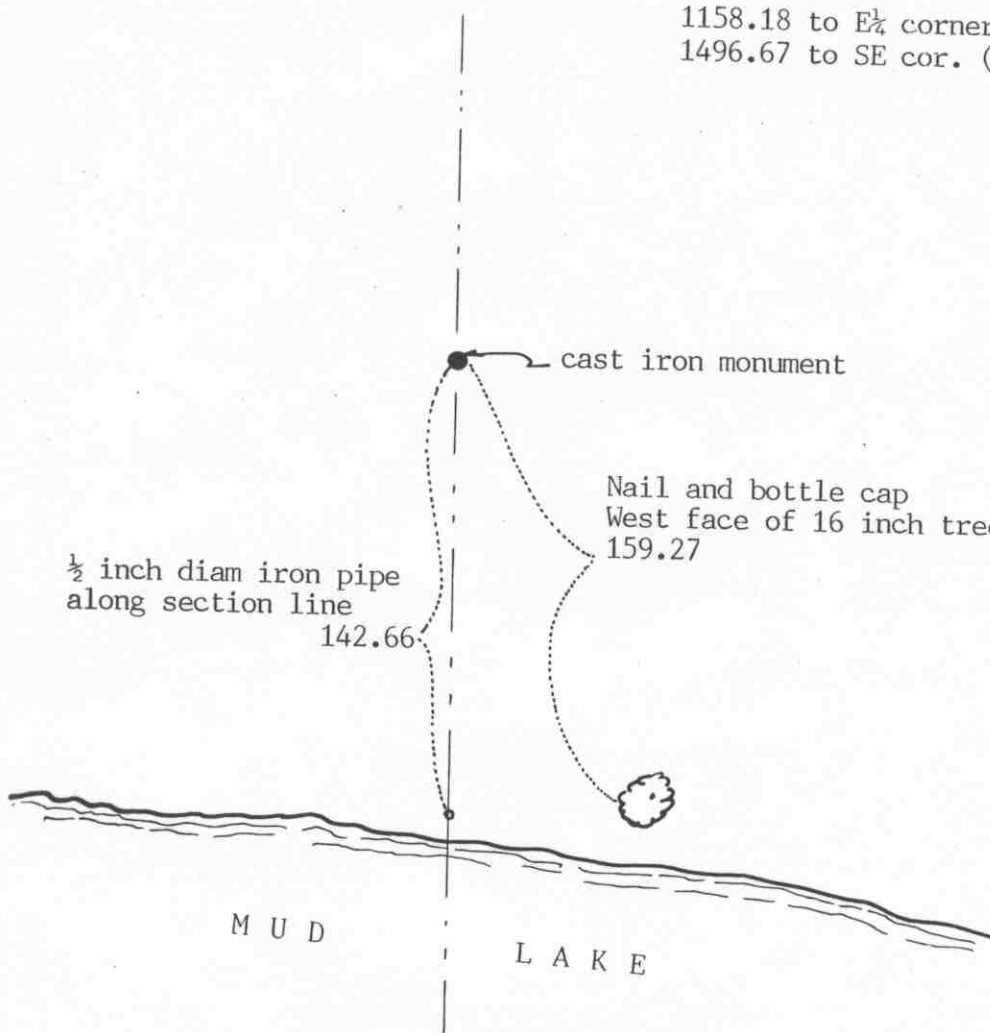
# Certificate of Location of Government Corner

## SKETCH OF REFERENCE TIES (NO SCALE)

1158.18 to E $\frac{1}{2}$  corner  
1496.67 to SE cor. (in lake)

SECTION 34

SECTION 35



Statement of evidence relative to this corner location on sheet 2

I hereby certify that this document was prepared by me or under my direct supervision.

Willard Pellinen

Willard Pellinen  
McLeod County Surveyor  
License No. 9626

Date Jan. 8, 1992

OFFICE OF THE COUNTY RECORDER  
MCLEOD COUNTY, MINNESOTA.

I hereby certify that this document was filed in this office at 1 o'clock P.M. on the 16th day of Jan, 1992.

Carmen Botke, County Recorder

By \_\_\_\_\_, Deputy

Document No. 242900 No Fee

Meander \_\_\_\_\_ corner, Section 34, Township 117 North, Range 28 West

## Certificate of Location of Government Corner

Meander corner No. 2, north of Mud Lake, south of east quarter corner of Sec. 34.

1856. Oscar Taylor of the General Land Office set a post and marked an elm and an ash for bearing trees.

March 11, 1980. We set a  $\frac{1}{2}$  inch diameter iron pipe on a proration of government distances between the east quarter corner and the computed location of the southeast corner of Section 34. The southeast corner falls in Mud Lake. 1158.18 feet to the east quarter corner and 1496.67 to the computed location of the southeast corner.

July 16, 1980. We set a McLeod County cast iron monument deep with a  $\frac{1}{2}$  inch diameter iron pipe on top and took reference ties.

January 30, 1991. We checked the reference ties to the corner.

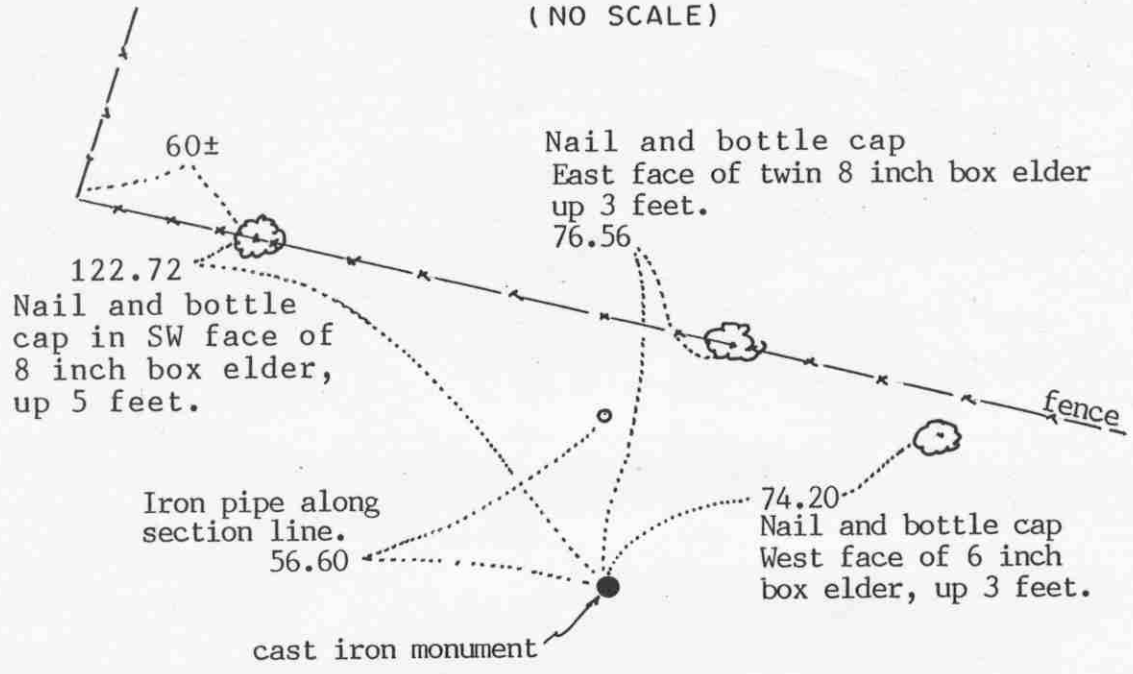
EAST QUARTER corner, Section 34, Township 117 North, Range 28 West

# Certificate of Location of Government Corner

## SKETCH OF REFERENCE TIES (NO SCALE)

SECTION 34

SECTION 35



Statement of evidence relative to this corner location on sheet 2

I hereby certify that this document was prepared by me or under my direct supervision.

Willard Pellinen  
Willard Pellinen  
McLeod County Surveyor  
License No. 9626

Date Feb 1, 1994

OFFICE OF THE COUNTY RECORDER  
MCLEOD COUNTY, MINNESOTA.

I hereby certify that this document was filed in this office at 9 o'clock A. M. on the 7th day of February, 1994.

Carmen Ostlie Gulder, County Recorder

By Jan Petrick, Deputy

Document No. 257730

EAST QUARTER            corner, Section 34, Township 117 North, Range 28 West

## Certificate of Location of Government Corner

1856. This corner was originally established by the General Land Office. Oscar Taylor set a post and marked a 10 inch butternut and a 9 inch linden for bearing trees.

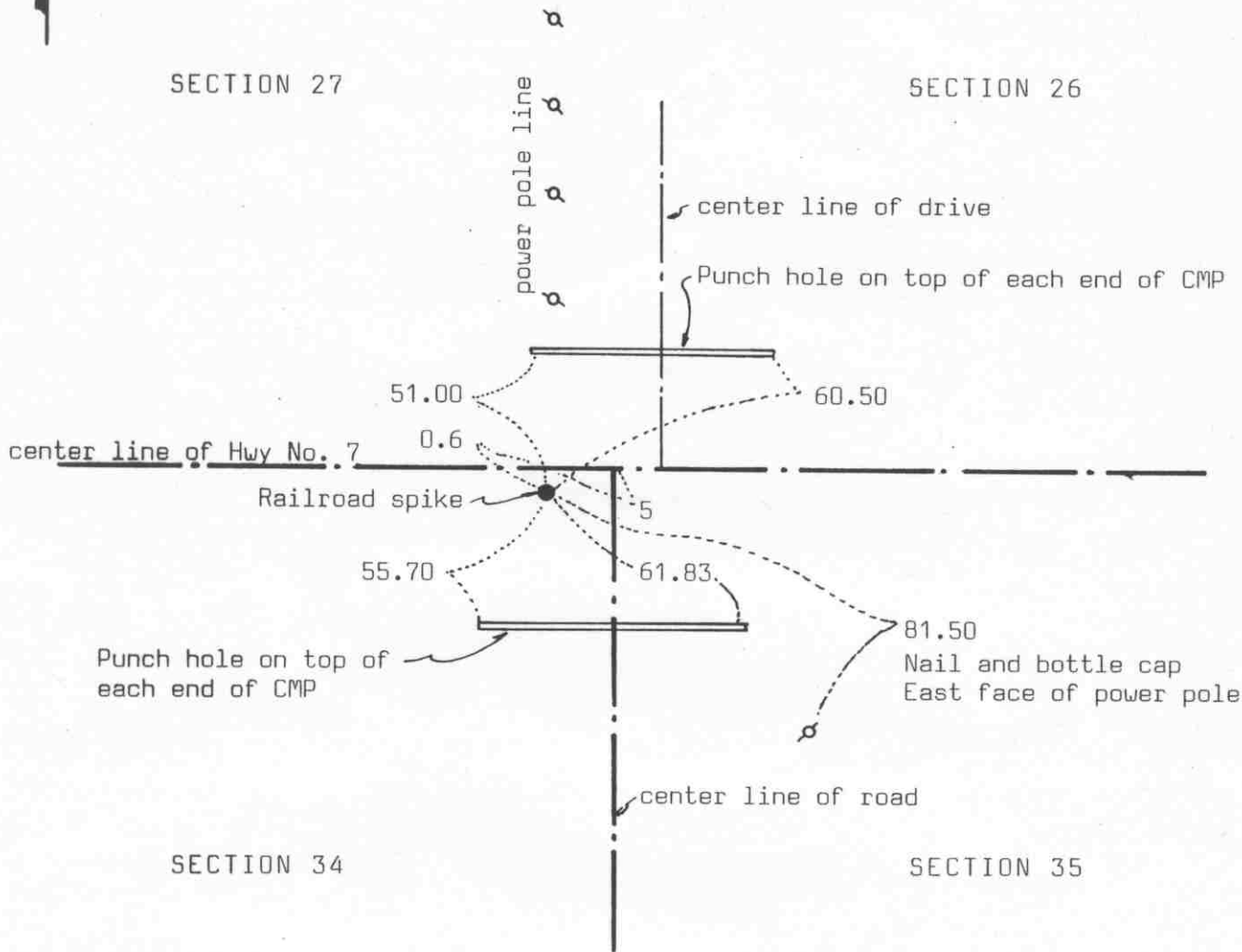
March 11, 1980. We set an iron pipe midway between the section corners. The location of the southeast corner of Section was computed location. The southeast corner falls in the lake. We set the corner on the southerly prolongation of a line from the northeast corner of the section through an iron pipe (found) which was approximately  $\frac{1}{4}$  mile south of the northeast corner. The iron pipe was on the south side of a wood post which has been accepted as being along the section line, by the adjoining land owners. This iron pipe was approximately  $8\frac{1}{2}$  feet south of the 1/16 corner. Our quarter corner is 5 feet south of the easterly prolongation of the cemetery fence to the west and 5 feet north of the westerly prolongation of a fence to the east. We set available reference ties.

July 15, 1980. We set a McLeod County cast iron monument deep with a  $\frac{1}{2}$  inch diameter iron pipe over it.

December 29, 1993. We found the monument in good condition down 16 inches below the surface of the ground. We took new available reference ties.

# Certificate of Location of Government Corner

## SKETCH OF REFERENCE TIES (NO SCALE)



### Statement of evidence relative to this corner location on sheet 2

I hereby certify that this document was prepared by me or under my direct supervision.

Willard Pellinen

Willard Pellinen  
McLeod County Surveyor  
License No. 9626

Date Jan 1, 1991

OFFICE OF THE COUNTY RECORDER  
MCLEOD COUNTY, MINNESOTA.

I hereby certify that this document was filed in this office at 3 o'clock P.M. on the 15th day of Jan, 1991.

Carmen Ostlie, County Recorder

By \_\_\_\_\_, Deputy

Document No. 237119

## Certificate of Location of Government Corner

1856. Oscar Taylor of the General Land Office established this corner. He set a post and marked 4 elm trees for bearing trees.

1950. Carlisle Madson, Sr., surveyor, dug up the corner. He found a large rock with a small one on top down 3 feet below the surface. He set an angle iron flush with the ground. He measured 2636.6 feet to the north quarter corner of Section 35.

State Highway No. 7 right of way plans show the state found an angle iron 0.6 feet south of center line station 525+49.0.

December 19, 1972. McCombs Knutson Associates (Dickman Knutson, county surveyor) set a P.K.nail 0.6 feet south of center line station 525+49.0 as shown on the right of way map. George Pishney, 65 years old, has lived in the southwest quarter of Section 26 all his life, said he had a survey done in 1950 and a stone was found at that time. The power pole line running north was put near the west line of the Southwest Quarter of Section 26.

April 13, 1979. Knutson set a railroad spike at the corner and took reference ties.

July 13, 1989. We found the railroad spike and the reference ties good.

We measured 2635.30 feet to the north quarter corner of Section 35 compared with 2636.6 feet in 1950 by Madson.

We believe the stone found by Madson in 1950 had perpetuated the correct location of the Section corner.

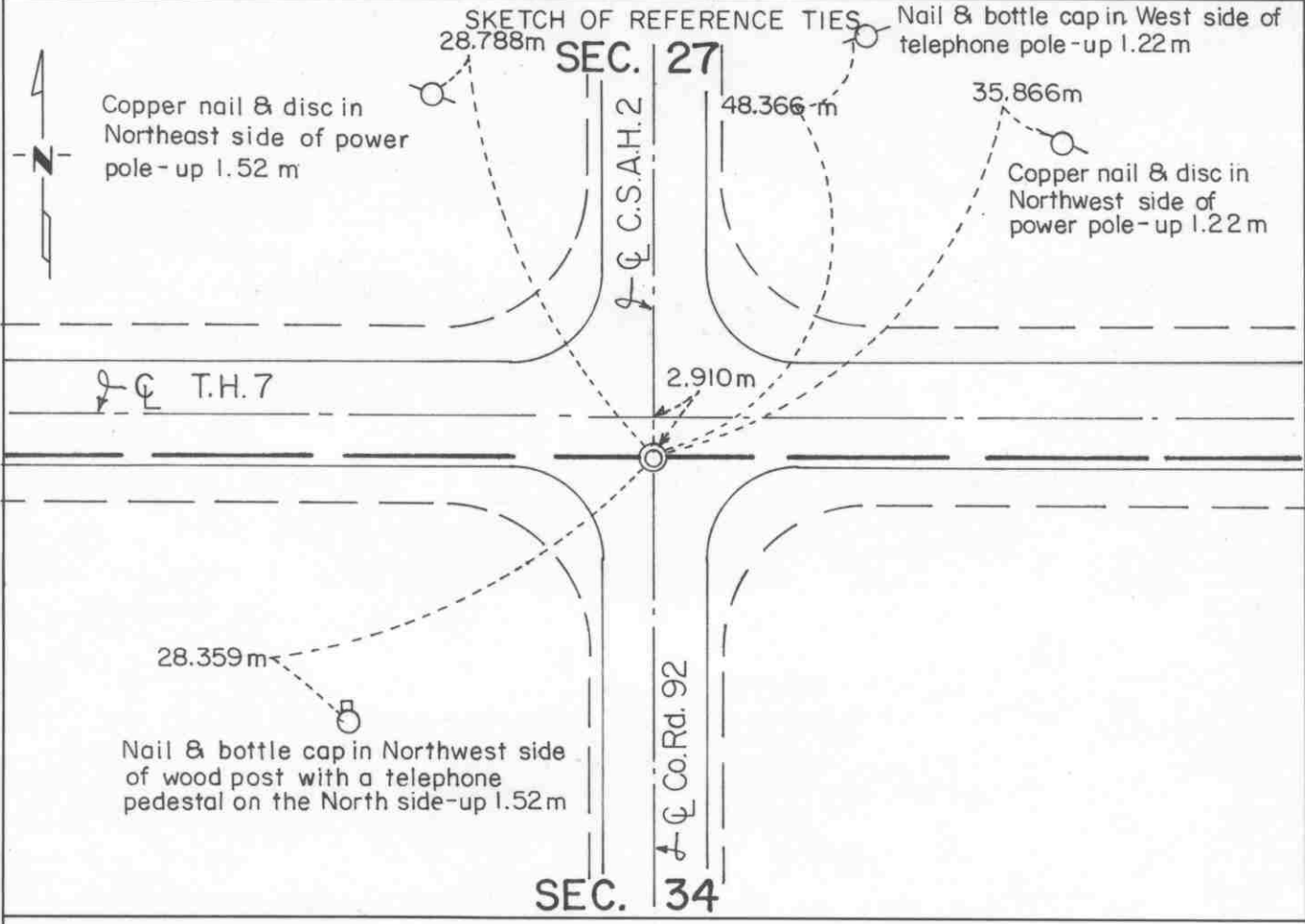
# CERTIFICATE OF LOCATION OF GOVERNMENT CORNER

North Quarter \_\_\_\_\_ Corner of Section 34, Township 117 N, Range 28 W, 5th P.M.

STATE OF MINNESOTA, County of McLeod

At the corner location shown on the sketch:

- On Dec. 10, 1997 found a railroad spike about 50 mm below the road surface  
DATE
- left monument as found,  lowered monument,  removed monument (explain)
- On \_\_\_\_\_ placed a \_\_\_\_\_  
DATE



Statement of evidence relative to this corner location is on back of page.

I hereby certify that this document and the data contained herein was prepared by me or under my direct supervision.

Robert Jones  
SIGNATURE  
Dec. 17, 1997  
DATE

Registration No. 11864

Land Surveyor,  Professional Engineer

County Surveyor,  County Engineer

OFFICE OF THE COUNTY RECORDER  
County of McLeod

I hereby certify that this document was filed in the Co. Recorders office at 8:00 a. .M. on the 22<sup>nd</sup> day of December A.D., 19 97

County Recorder Jarman Astlie Mulder  
By Jan Petrick, Deputy  
DOCUMENT NO. 283191



Statement of Evidence:

North Quarter Corner Section 34, T 117 N, R 28 W

- 1856- The original Public Land Survey was completed by Oscar Taylor. A wood post was set to mark the corner and reference was made to two bearing trees.
- 1939- The Minnesota Highway Department assumed that the corner was located at the intersection of north/south and east/west fence lines. The fence corner was located 9 feet south of T.H. 7 centerline station P.O.T. 499+00.
- 1983- Willard Pellinen, McLeod County Surveyor, found an iron pin at T.H. 7 station P.O.T. 499+00 and set a railroad spike 9.00 feet south of the pin. Four reference ties were set.

He stated that the railroad spike is located 3.96 feet east of a split between the section corners and 11.82 feet north of the line between the section corners.

- 1989- Willard Pellinen recovered the railroad spike and the reference ties in good condition.
- 1997- R. C. Jones, Registered Land Surveyor with Mn/DOT, recovered the railroad spike about 0.05 m below the road surface. Three of the four reference ties were good. One had changed and the distance to it was measured.

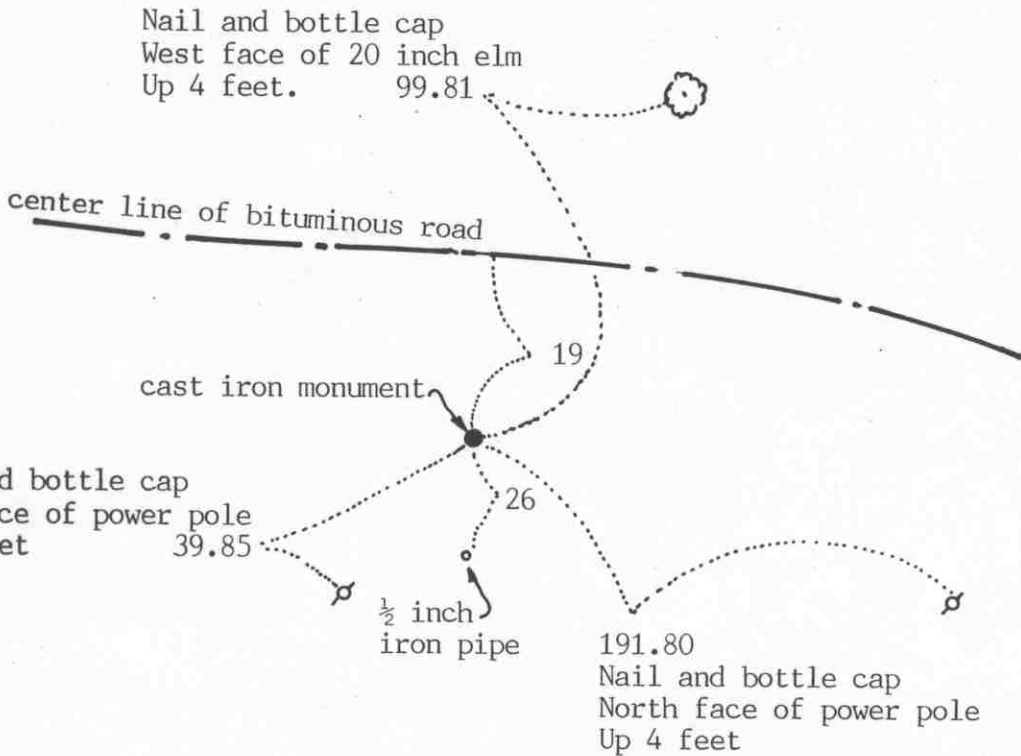
The coordinate position of the corner was derived from the section subdivision survey done by Pellinen in 1982. The railroad spike is located 2.91 m south of T.H. 7 P.O.T. 498+99.94 (metric station P.O.T. 243+639.854).

The railroad spike is accepted as the corner position because it fits occupation lines (the centerlines of roads north and south) and it closely fits the location shown in old Minnesota Highway Department surveys and on maps.

For additional information, contact the Mn/DOT Surveys Section at Willmar, Mn 56201.

# Certificate of Location of Government Corner

## SKETCH OF REFERENCE TIES (NO SCALE)



Statement of evidence relative to this corner location on sheet 2

I hereby certify that this document was prepared by me or under my direct supervision.

Willard Pellinen

Willard Pellinen  
McLeod County Surveyor  
License No. 9626

Date Jan 8, 1992

OFFICE OF THE COUNTY RECORDER  
MCLEOD COUNTY, MINNESOTA.

I hereby certify that this document was filed in this office at 9 o'clock A.M. on the 9th day of January, 1992.

Carmen Ostlie, County Recorder

By \_\_\_\_\_, Deputy

Document No. 242775 NO FEE

## Certificate of Location of Government Corner

1855. John Ryan of the General Land Office originally established the corner. He set a post and marked 2 trees for bearing trees.

August 3, 1977. McCombs Knutson Associates (Dickman Knutson, county surveyor) found an iron pin at the center line of the east-west road.

May 21, 1979. We pounded the iron pin down and set 2  $\frac{1}{2}$  inch by 14 inch iron pipes on top and took reference ties. Road to be regraded.

April 14, 1981. We set a McLeod County cast iron monument and took new reference ties. Road has been relocated and the center line is now 19 feet north of the corner. The quarter corner is within  $\frac{1}{2}$  foot of being half way between the southwest corner and the computed southeast corner (in lake) of the section.

January 31, 1991. We found the monument in good condition and checked the reference ties.

We accept the iron pin found by Knutson as having perpetuated the correct location of the quarter corner.

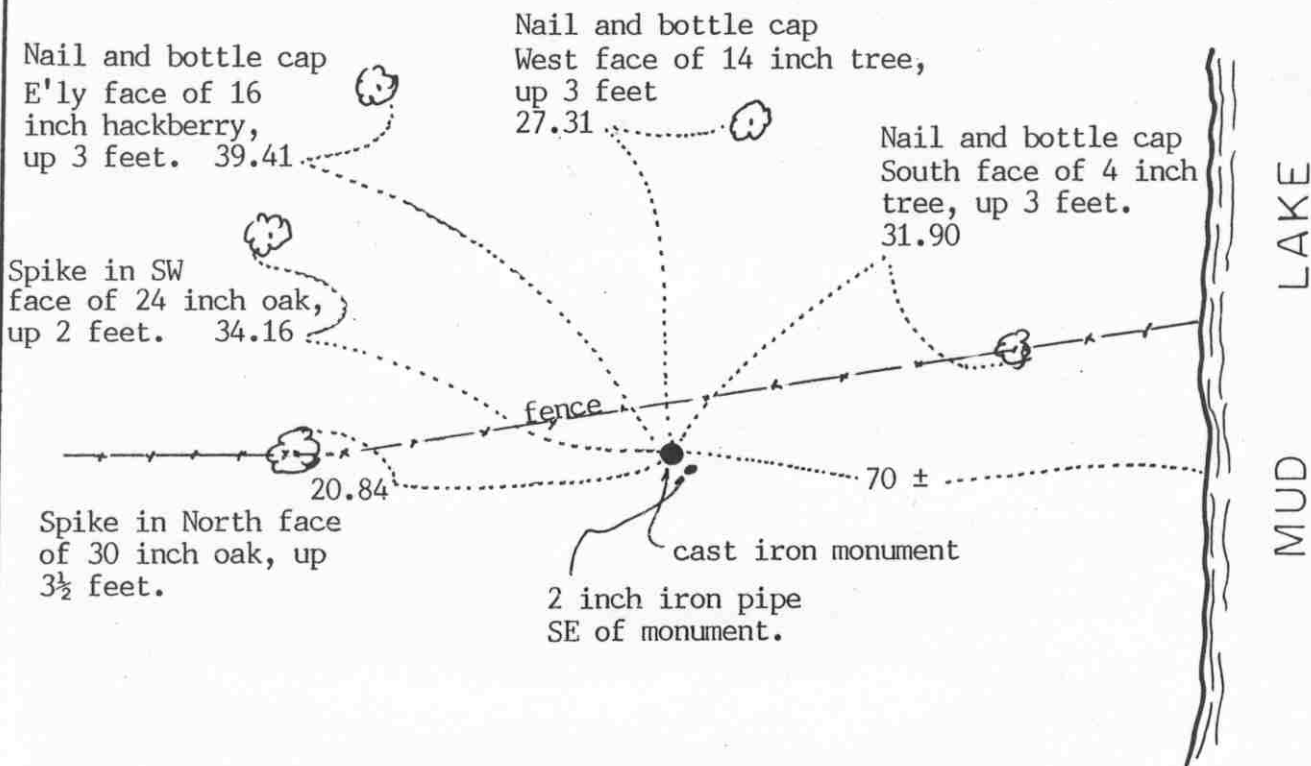
MEANDER No. 1 corner, Section 34, Township 116 North, Range 28 West

# Certificate of Location of Government Corner

## SKETCH OF REFERENCE TIES

(NO SCALE)

SECTION 34 T. 117 R. 28



SECTION 3 T. 116 R. 28

Statement of evidence relative to this corner location on sheet 2

I hereby certify that this document was prepared by me or under my direct supervision.

Willard Pellinen  
Willard Pellinen  
McLeod County Surveyor  
License No. 9626

Date Feb. 1, 1994.

OFFICE OF THE COUNTY RECORDER  
MCLEOD COUNTY, MINNESOTA.

I hereby certify that this document was filed in this office at 9 o'clock A.M. on the 7th day of February, 1994.

Carmen Antlie Mulder, County Recorder

By Jan Potrick, Deputy

Document No. 257731

### Certificate of Location of Government Corner

1855. John Ryan of the General Land Office originally established this corner. He set a post and marked a 7 inch butternut and a 24 inch linden for bearing trees.

April 14, 1981. We set the meander corner on a proration of government distances between the south quarter corner and the computed southeast corner of Section 34. The southeast corner falls in the lake and we computed the location half way between the south quarter corner of Section 34 and the south quarter corner of Section 35. We set a cast iron monument and took available reference ties. Government distance to the south quarter corner was 29.65 chains (1956.9 feet). Our distance is 1943.77 feet. Government distance to the southeast corner was 10.35 chains (683.1 feet). Our distance is 678.52 feet.

December 29, 1993. We found the monument in good condition down 4 inches below the surface and took new reference ties.



OFFICE OF COUNTY RECORDER  
McLEOD COUNTY MINNESOTA



DOCUMENT NUMBER A-339904

CERTIFIED FILED AND/OR RECORDED ON  
January 29, 2004, AT 11:15:00 AM

LYNN ETTIE SCHRUPP, COUNTY RECORDER  
Fees:

EQUIPMENT FUND	\$3.00
SURCHARGE	4.50
SURCHARGE ERER	.50
GENERAL ABSTRACT	12.00
<b>Total</b>	<b>\$20.00</b>

Received from/return to:  
MINNESOTA DEPARTMENT OF TRANSPORTATION  
2505 TRANSPORTATION ROAD  
P O BOX 768  
WILLMAR, MN 56201- 0768

A-339904

6134

# CERTIFICATE OF LOCATION OF GOVERNMENT CORNER

EAST QUARTER Corner of Section 35, Township 117 N, Range 28 W  
5th Principal Meridian, State of Minnesota, County of McLEOD

At the corner location shown on the sketch:

On 06/19/2003 found a CAST IRON MONUMENT IN-PLACE  
DATE AT GROUND LEVEL IN A TREE LINE

left monument as found     lowered monument     removed monument (explain)

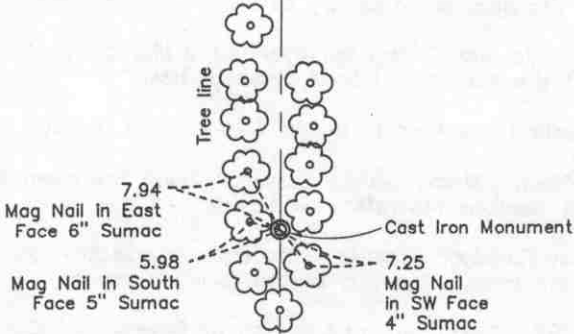
On \_\_\_\_\_ placed a \_\_\_\_\_  
DATE \_\_\_\_\_

## SKETCH OF REFERENCE TIES



SECTION 35, TOWNSHIP 117, RANGE 28

SECTION 36, TOWNSHIP 117, RANGE 28



(R) - Record  
no measurements taken

Statement of evidence for this corner location is on back of this page.

I hereby certify that this document was researched and prepared by me or under my direct supervision.

Signature *Keith Dahl* Date January 29, 2004 License No. 18418  
KEITH DAHL

Title:  Land Surveyor     Professional Engineer     County Surveyor     County Engineer

East Quarter Corner  
Section 35, Township 117 North, Range 28 West, 5th Principal  
Meridian

Statement of Evidence:

1855. Oscar Taylor of the General Land Office set a post and marked an aspen and an elm for bearing trees.

August 3, 1977. McCombs Knutson Associates (Dickman Knutson, county surveyor) set a temporary quarter corner at a fence intersection, fences north, south and west. They searched the area but found no corner stone or monument.

August 4, 1977. Ernest Schultz, 60 years old, had lived in the Northwest Quadrant of Section 36 all his life, said the fence intersection has been accepted as the quarter corner by adjoining property owners.

July 3, 1979. McLeod County Surveyor set a McLeod County cast iron monument at the corner and took available ties.

This corner falls 10 feet north and 5 feet east of a lost corner position.

January 30, 1991. McLeod County Surveyor found the monument in good condition and checked the reference ties.

McLeod County Surveyor accepted the fence intersection as having perpetuated the correct location of the quarter corner.

January 8, 1992. Certificate of Location of Government Corner by Willard Pellinen, McLeod County Surveyor, Registration No. 9626; filed as Doc. No. 242901, McLeod County, Minnesota.

June 19, 2003. URS survey crew found cast iron monument in-place at ground surface and in good condition. Monument located in thick brush along a tree line. As referenced in the Certificate of Location of Government Corner cited above no reference ties were set. The URS crew did not set any ties at this time.

January 20, 2004. URS survey crew set and measured new reference ties as shown on Sheet 1.





OFFICE OF COUNTY RECORDER  
MCLEOD COUNTY MINNESOTA



DOCUMENT NUMBER A-339905

CERTIFIED FILED AND/OR RECORDED ON  
January 29, 2004, AT 11:15:00 AM

LYNN ETTIE SCHRUPP, COUNTY RECORDER  
Fees:

EQUIPMENT FUND	\$3.00
SURCHARGE	4.50
SURCHARGE ERER	.50
GENERAL ABSTRACT	12.00
Total	\$20.00

A-339905

Received from/return to:  
MINNESOTA DEPARTMENT OF TRANSPORTATION  
2505 TRANSPORTATION ROAD  
P O BOX 768  
WILLMAR, MN 56201-0768

6034

# CERTIFICATE OF LOCATION OF GOVERNMENT CORNER

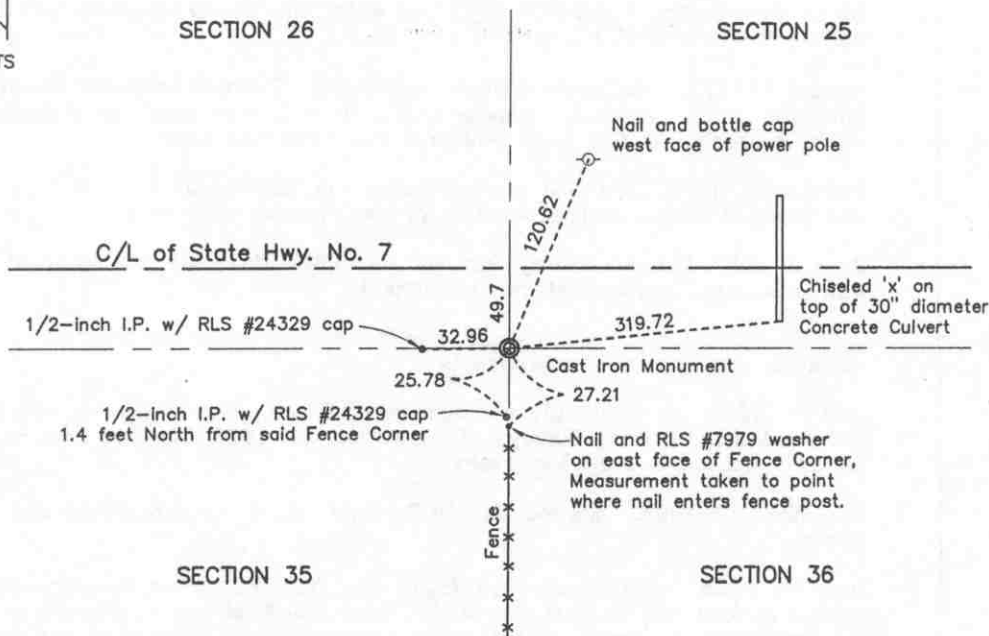
NORTHEAST Corner of Section 35, Township 117 N, Range 28 W  
5TH Principal Meridian, State of Minnesota, County of MCLEOD

At the corner location shown on the sketch:

- On 6/19/03 found a CAST IRON MONUMENT IN-PLACE  
DATE AT GROUND SURFACE
- left monument as found     lowered monument     removed monument (explain)
- On \_\_\_\_\_ placed a \_\_\_\_\_  
DATE



## SKETCH OF REFERENCE TIES



Statement of evidence for this corner location is on back of this page.

I hereby certify that this document was researched and prepared by me or under my direct supervision.

Signature *Keith Dahl* Date January 29, 2004 License No. 18418  
KEITH DAHL

Title:  Land Surveyor     Professional Engineer     County Surveyor     County Engineer

A-339905

**Northeast Corner  
Section 35, Township 117 North, Range 28 West, 5th Principal  
Meridian**

**Statement of Evidence:**

The government notes show this corner was set in 1856 by Oscar Taylor. He set a post and marked 4 trees for bearing trees.

1950. Carlisle Madson Sr., surveyor, found a large rock down 1 foot below the surface. He set a 1-inch angle iron flush with the ground.

State Highway No. 7 right of way plans show they found an angle iron 49.2 feet south of P.O.T. station 578+24.3.

August 1, 1977. McCombs Knutson Associates (Dickman Knutson, County Surveyor) set a 1/2-inch diameter iron pipe 49.2-feet south of Highway P.O.T. centerline station 578+24.3 and took reference ties.

February 7, 1978. Knutson again checked the location of the iron pipe and found it in the correct location as per highway stationing.

June 3, 1987. McLeod County Surveyor found the iron pipe and replaced it with a McLeod County cast iron monument.

July 13, 1989. McLeod County Surveyor found the monument in good condition and took new reference ties.

July 24, 1990. A Certificate of Location of Government Corner by Willard Pellinen McLeod County Surveyor, Registration No. 9626; filed as Doc. No. 258547, McLeod County, Minnesota.

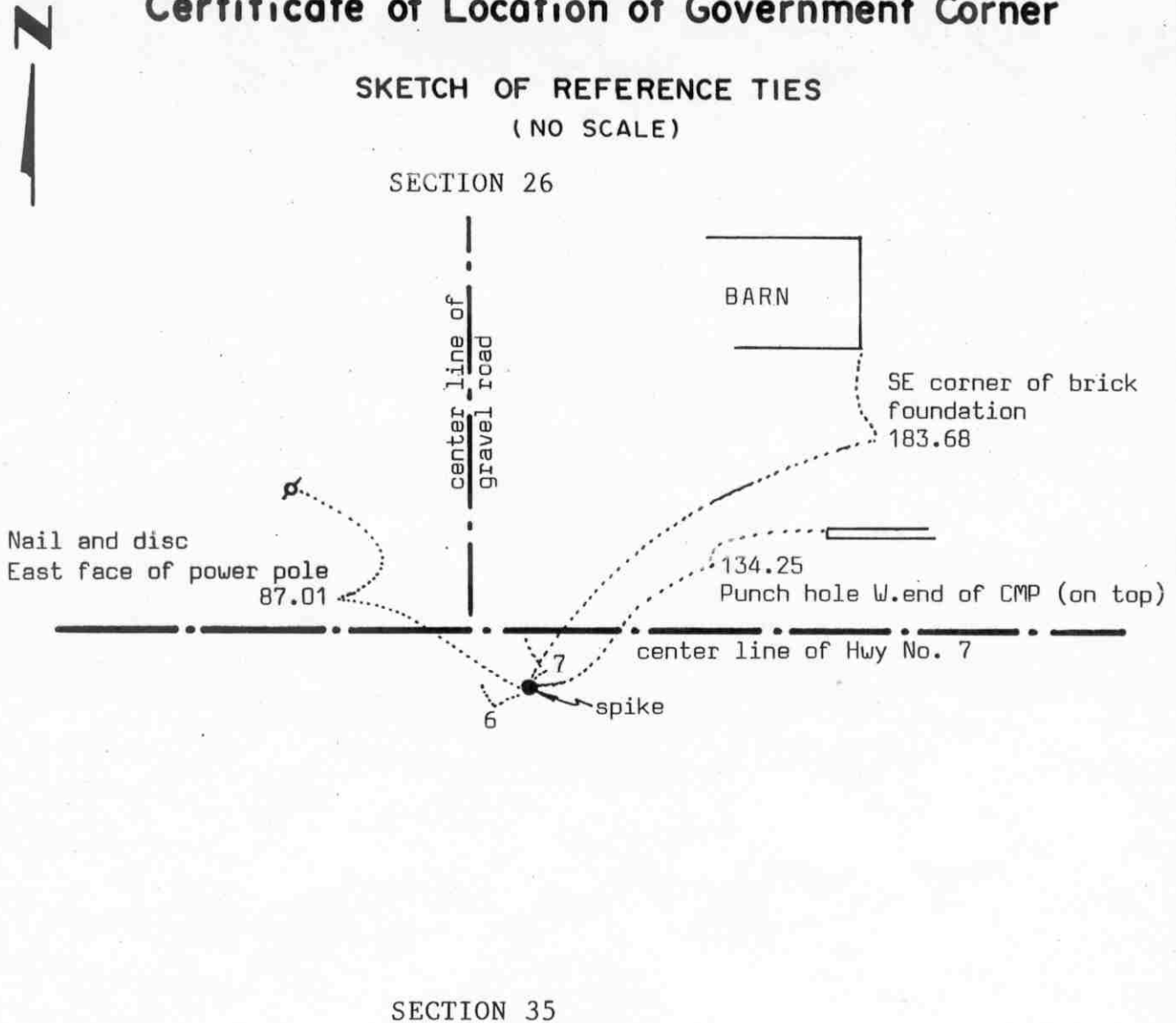
December 29, 1993. McLeod County Surveyor found the monument and ties ok.

June 19, 2003. URS survey crew found cast iron monument in-place at ground surface and in good condition. They found all ties referenced on the Certificate of Location cited above except the one located on the face of the 6th fence post from the corner (fence was found to be in poor condition). The tie distances were checked and found to have minor discrepancies. The corrected distances are noted on Sheet 1. They also found two 1/2-inch iron pipes with cap LS #24329 as shown on Sheet 1 and tied both pipes to the monument.

January 21, 2004. URS field crew measured to additional tie as shown on Sheet 1.

# Certificate of Location of Government Corner

## SKETCH OF REFERENCE TIES (NO SCALE)



Statement of evidence relative to this corner location on sheet 2

I hereby certify that this document was prepared by me or under my direct supervision.

Willard Pellinen  
 Willard Pellinen  
 McLeod County Surveyor  
 License No. 9626

Date July 24, 1990

OFFICE OF THE COUNTY RECORDER  
 MCLEOD COUNTY, MINNESOTA.

I hereby certify that this document was filed in this office at 9 o'clock A. M. on the 1st day of August, 1990.

Carmen Ostlie, County Recorder

By \_\_\_\_\_, Deputy

Document No. 234723

NORTH-QUARTER corner, Section 35, Township 117 North, Range 28 West

## Certificate of Location of Government Corner

In 1856 Oscar Taylor of the General Land Office set a post for the corner and marked 2 elm trees for bearing trees.

1950. Carlisle Madson, Sr., didn't find the corner so he set the quarter corner by lost methods, on line and split between the section corners.

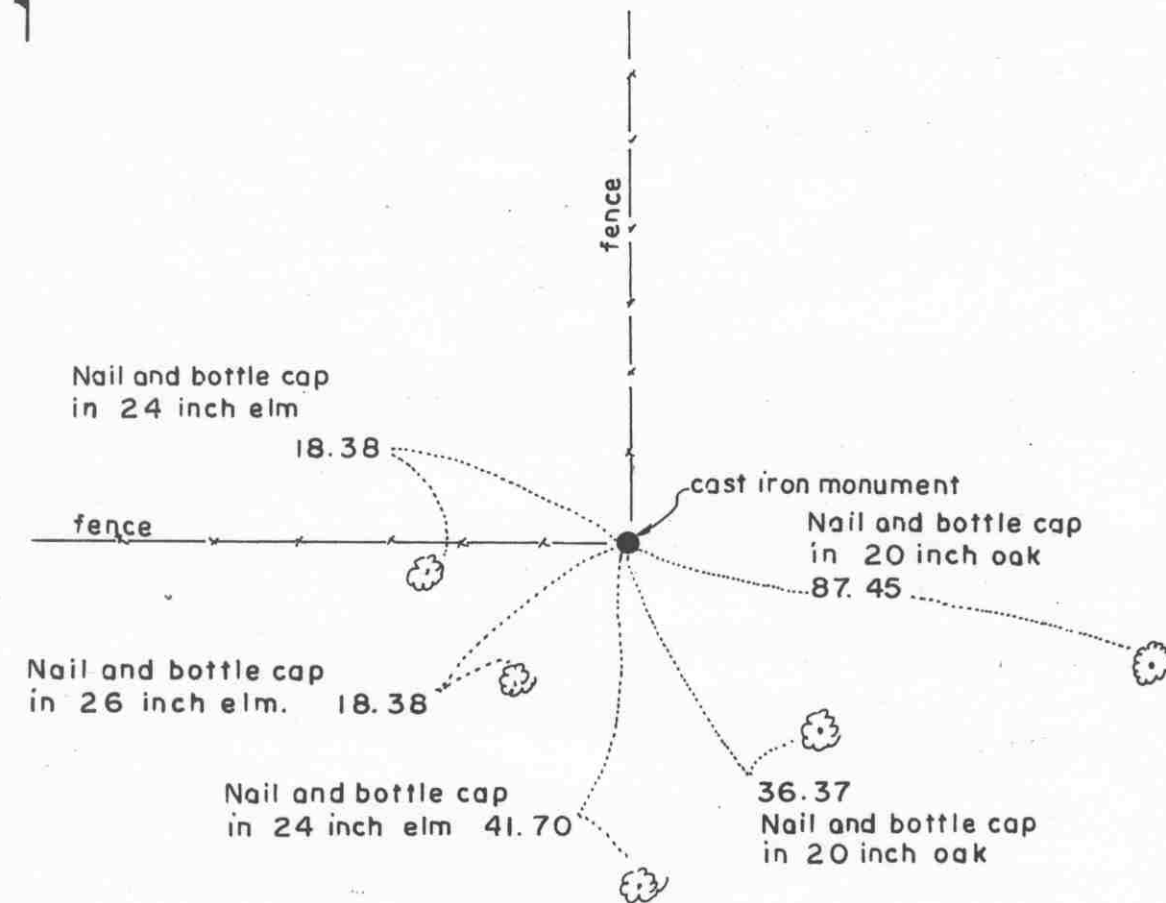
August 1, 1977. McCombs Knutson Associates (Dickman Knutson, county surveyor) set a spike on line and split between the section corners and took reference ties.

July 13, 1989. Only 1 reference tie remaining. We found the spike and took new reference ties. We measured 2635.02 feet to the northeast corner and to the northwest corners of Section 35, compared with 2636.6 by Madson in 1950.

# Certificate of Location of Government Corner

## SKETCH OF REFERENCE TIES

(NO SCALE)



Statement of evidence relative to this corner location on sheet 2

I hereby certify that this document was prepared by me or under my direct supervision.

Willard Pellinen

Willard Pellinen  
McLeod County Surveyor  
License No. 9626

Date Feb. 1, 1995

OFFICE OF THE COUNTY RECORDER  
MCLEOD COUNTY, MINNESOTA.

I hereby certify that this document was filed in this office at 9 o'clock A.M. on the 6th day of February, 1995.

Carmen O'Brien Mulder, County Recorder

By \_\_\_\_\_, Deputy

Document No. 264047

## Certificate of Location of Government Corner

1855. John Ryan of the General Land Office originally established this corner. He set a post and marked a 24 inch and a 7 inch elm for bearing trees.

November 23, 1968. McCombs Knutson Associates (Dickman Knutson, county surveyor) found a stone at a fence intersection which has been accepted as the quarter corner by adjoining land owners.

Knutson replaced the stone with a McLeod County cast iron monument and set available reference ties.

August 3, 1977. The monument was in good condition.

1982. The monument was still in good condition and we measured the south line of Section 35. We found the monument to be approx 5 feet west and  $4\frac{1}{2}$  feet north of a lost position for the corner.

The monument set by Knutson is accepted as marking the south quarter corner. It fits long standing occupation lines, the fences, and it perpetuates the location of an older monument, the stone. It falls close to a lost position for the corner.



OFFICE OF COUNTY RECORDER  
MCLEOD COUNTY MINNESOTA



DOCUMENT NUMBER A-339903

CERTIFIED FILED AND/OR RECORDED ON  
January 29, 2004, AT 11:15:00 AM

LYNN ETTIE SCHRUPP, COUNTY RECORDER  
Fees:

EQUIPMENT FUND	\$3.00
SURCHARGE	4.50
SURCHARGE ERER	.50
GENERAL ABSTRACT	12.00
Total	\$20.00

Received from/return to:  
MINNESOTA DEPARTMENT OF TRANSPORTATION  
2505 TRANSPORTATION ROAD  
P O BOX 768  
WILLMAR, MN 56201- 0768

A-339903

6234

# CERTIFICATE OF LOCATION OF GOVERNMENT CORNER

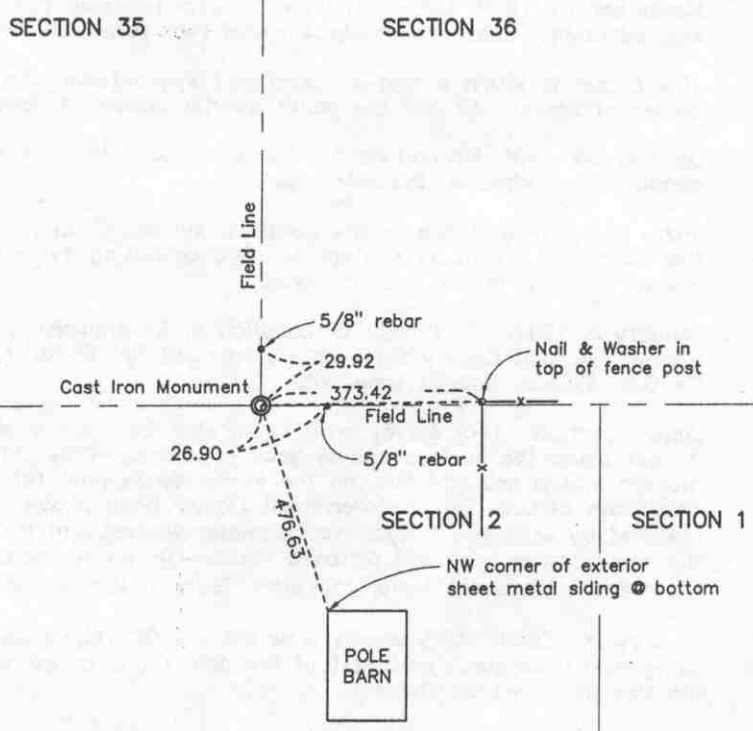
SOUTHEAST Corner of Section 35, Township 117 N, Range 28 W  
5th Principal Meridian, State of Minnesota, County of McLEOD

At the corner location shown on the sketch:

- On 6/19/03 found a CAST IRON MONUMENT IN-PLACE  
DATE 2-FEET BELOW SURFACE
- left monument as found     lowered monument     removed monument (explain)
- On \_\_\_\_\_ placed a \_\_\_\_\_  
DATE \_\_\_\_\_

## SKETCH OF REFERENCE TIES

TOWNSHIP 117, RANGE 28



(R) - Record, no measurements taken

TOWNSHIP 116, RANGE 28

Statement of evidence for this corner location is on back of this page.

I hereby certify that this document was researched and prepared by me or under my direct supervision.

Signature Keith Dahl Date January 29, 2004 License No. 18418  
Title:  Land Surveyor     Professional Engineer     County Surveyor     County Engineer

A-339903



Southeast Corner  
Section 35, Township 117 North, Range 28 West, 5th Principal  
Meridian

Statement of Evidence:

1855. John Ryan of the General Land Office set a post and marked 2 elms for bearing trees.

1968. McCombs Knutson Associates (Dickman Knutson, county surveyor) found a wood post at the corner.

November 16, 1979. McLeod County Surveyor replaced the wood post with a McLeod County cast iron monument and took reference ties.

This corner is within a foot of being half way between the south quarter corner of Section 35 and the south quarter corner of Section 36.

January 30, 1991. McLeod County Surveyor found the monument in good condition and checked the reference tie.

There being no evidence to the contrary, McLeod County Surveyor accepted the wood post found by Knutson in 1968 as having perpetuated the correct location of the section corner.

January 8, 1992. Certificate of Location of Government Corner by Willard Pellinen, McLeod County Surveyor, Registration No. 9626; filed as Doc. No. 242902, McLeod County, Minnesota.

June 19, 2003. URS survey crew found cast iron monument in-place 2-feet below the surface and in good condition. They did not find the tie marked with a nail and disc on the corner fence post referenced on Certificate of Location of Government Corner cited above. The tie was restored by setting a 1-1/2 inch diameter washer with P.K. nail on top of the wood corner post and distance taken. They also made a tie from the NW corner of a sheet metal pole barn, SE'y of the corner.

January 20, 2004. URS survey crew set 2 5/8" rebars as reference ties along field lines north and east of the corner and measured distances to the ties as shown on sheet 1.



OFFICE OF COUNTY RECORDER  
MCLEOD COUNTY MINNESOTA



DOCUMENT NUMBER A-339908

CERTIFIED FILED AND/OR RECORDED ON  
January 29, 2004, AT 11:15:00 AM

LYNN ETTIE SCHRUPP, COUNTY RECORDER  
Fees:

EQUIPMENT FUND	\$3.00
SURCHARGE	4.50
SURCHARGE ERER	.50
GENERAL ABSTRACT	12.00
Total	\$20.00

A-339908

Received from/return to:  
MINNESOTA DEPARTMENT OF TRANSPORTATION  
2505 TRANSPORTATION ROAD  
P O BOX 768  
WILLMAR, MN 56201- 0768

6136

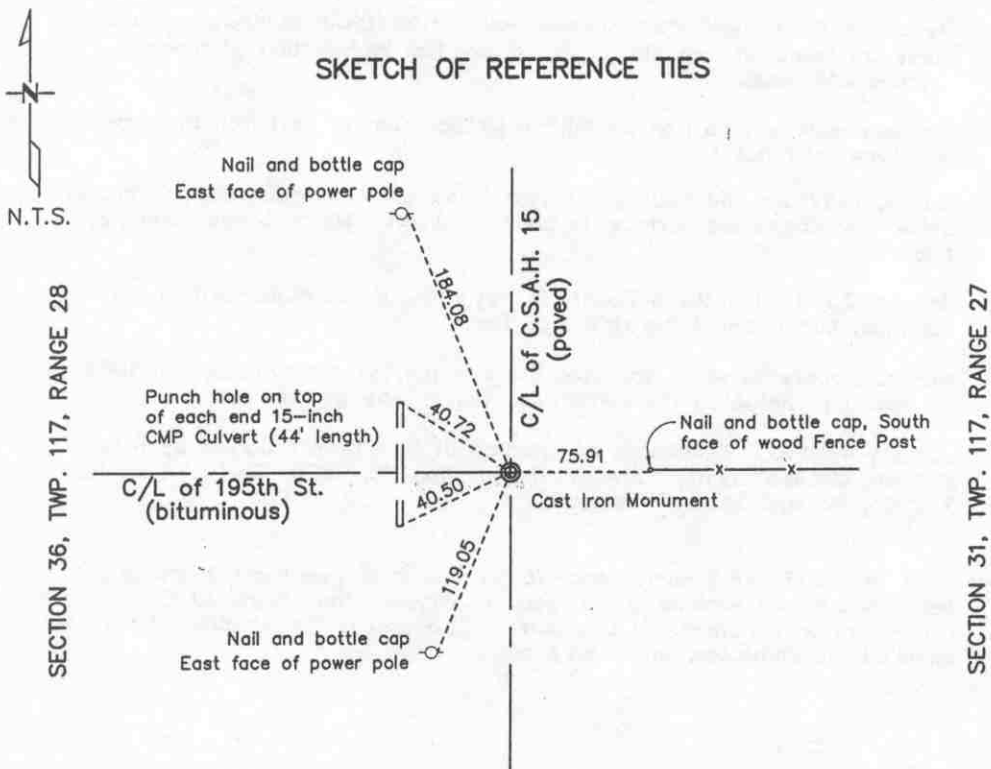
# CERTIFICATE OF LOCATION OF GOVERNMENT CORNER

EAST QUARTER Corner of Section 36, Township 117 N, Range 28 W  
5th Principal Meridian, State of Minnesota, County of MCLEOD

At the corner location shown on the sketch:

- On 6/19/03 found a CAST IRON MONUMENT IN-PLACE 6" BELOW  
DATE BITUMINOUS SURFACE
- left monument as found     lowered monument     removed monument (explain)
- On \_\_\_\_\_ placed a \_\_\_\_\_  
DATE

## SKETCH OF REFERENCE TIES



Statement of evidence for this corner location is on back of this page.

I hereby certify that this document was researched and prepared by me or under my direct supervision.

Signature Keith Dahl Date January 29, 2004 License No. 18418  
Title:  Land Surveyor     Professional Engineer     County Surveyor     County Engineer

A-339908

East Quarter Corner  
Section 36, Township 117 North, Range 28 West, 5th Principal  
Meridian

Statement of Evidence:

This corner was originally established by the government in 1855. John Ryan set a post and marked an ironwood and a hickory tree for bearing trees.

December 1968. McCombs Knutson Associates (Dickman Knutson, county surveyor) found an iron pin on the center line intersection of roads north-south-west.

Knutson replaced the iron pin with a McLeod County cast iron monument and took reference ties.

July 3, 1987. McLeod County Surveyor found the monument down 6 inches below the bituminous surface, in good condition. We took new reference ties.

January 30, 1991. McLeod County Surveyor found the monument in good condition and checked the reference ties.

McLeod County Surveyor accepted the iron pin found by Knutson in 1968 as having perpetuated the correct location of the quarter corner.

January 4, 1992. Certificate of Location of Government Corner by Willard Pellinen, McLeod County Surveyor, Registration No. 9626; filed as Doc. No. 242903, McLeod County, Minnesota.

June 19, 2003. URS survey crew found cast iron monument in-place 6" below bituminous surface and in good condition. They found all ties referenced on Certificate of Location of Government Corner cited above and checked the distances, which were good.



OFFICE OF COUNTY RECORDER  
MCLEOD COUNTY MINNESOTA

DOCUMENT NUMBER A-339910

CERTIFIED FILED AND/OR RECORDED ON  
January 29, 2004, AT 11:15:00 AM

LYNN ETTA SCHRUPP, COUNTY RECORDER  
Fees:

EQUIPMENT FUND	\$3.00
SURCHARGE	4.50
SURCHARGE ERER	.50
GENERAL ABSTRACT	12.00
Total	\$20.00

Received from/return to:  
MINNESOTA DEPARTMENT OF TRANSPORTATION  
2505 TRANSPORTATION ROAD  
P O BOX 768  
WILLMAR, MN 56201- 0768

A-339910

6036

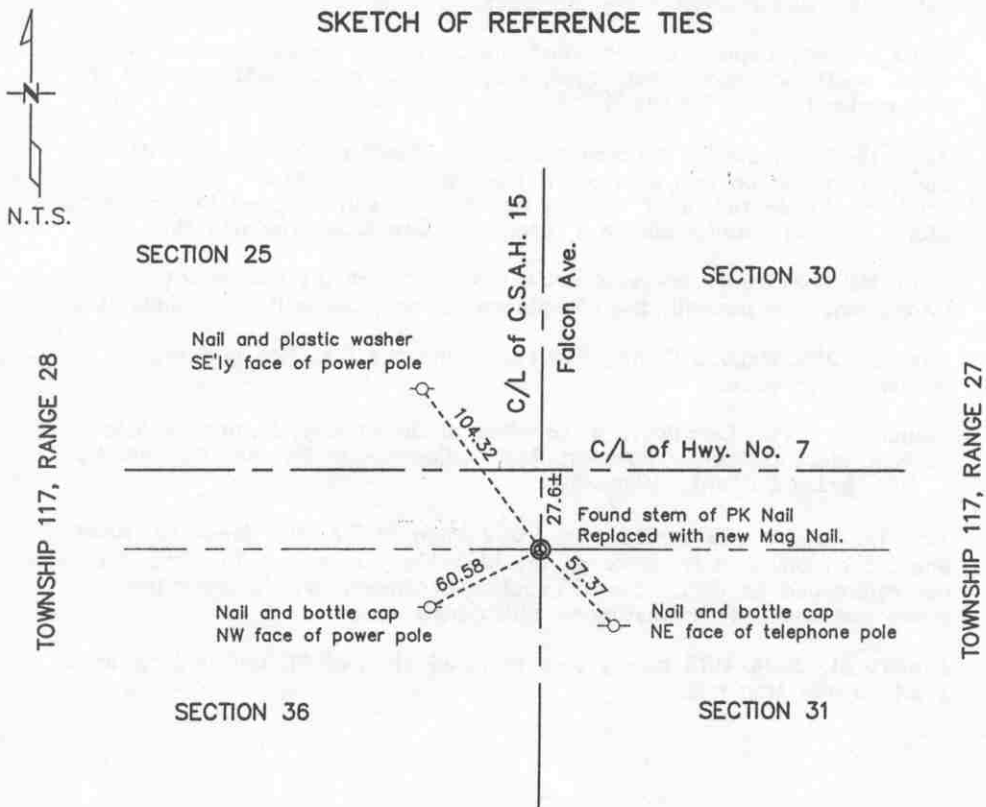
# CERTIFICATE OF LOCATION OF GOVERNMENT CORNER

NORTHEAST Corner of Section 36, Township 117 N, Range 28 W  
5th Principal Meridian, State of Minnesota, County of McLEOD

At the corner location shown on the sketch:

- On 6/19/03 found a STEM OF PK NAIL IN-PLACE  
DATE (HEAD BROKE OFF) AT THE SURFACE OF ROAD
- left monument as found     lowered monument     removed monument (explain)
- On 1/21/04 placed a new Mag nail to replace the stem of the PK nail referenced above.  
DATE

## SKETCH OF REFERENCE TIES



Statement of evidence for this corner location is on back of this page.

I hereby certify that this document was researched and prepared by me or under my direct supervision.

Signature Keith Dahl Date January 29, 2004 License No. 18418  
 Title:  Land Surveyor     Professional Engineer     County Surveyor     County Engineer

A-339910

Northeast Corner  
Section 36, Township 117 North, Range 28 West, 5th Principal  
Meridian

Statement of Evidence:

1855. John Ryan of the General Land Office established this corner. He set a post and marked 4 bearing trees.

State Highway Department assumed the corner at the intersection of north-south and east-west roads, which was about 30 feet south of the new center line of Highway No. 7.

June, 1969. McCombs Knutson Associates (Dickman Knutson, County Surveyor) found an iron pipe below the bituminous surface 27.50 feet south of the centerline of Highway No. 7. Knutson replaced the iron pipe with a McLeod County cast iron monument and took reference ties.

1980. McLeod County Surveyor set a P.K. Nail over the monument (monument now beneath the bituminous surface) using the reference ties.

July 13, 1989. McLeod County Surveyor found the P.K. Nail and the reference ties good.

January 1, 1991. Certificate of Location of Government Corner by Willard Pellinen, McLeod County Surveyor, Registration No. 9626; filed as Doc. No. 237121, McLeod County, Minnesota.

June 19, 2003. URS survey crew found stem of P.K. Nail in-place (head was broken off) and is visible on the bituminous surface. They found all ties referenced on Certificate of Location of Government Corner cited above and checked the distances, which were good.

January 21, 2004. URS survey crew removed stem of PK nail and replaced it with a new Mag nail.



OFFICE OF COUNTY RECORDER  
McLEOD COUNTY MINNESOTA

DOCUMENT NUMBER A-339909

CERTIFIED FILED AND/OR RECORDED ON  
January 29, 2004, AT 11:15:00 AM

LYNN ETTIE SCHRUPP, COUNTY RECORDER

Fees:		
EQUIPMENT FUND		\$3.00
SURCHARGE		4.50
SURCHARGE ERER		.50
GENERAL ABSTRACT		12.00
Total		\$20.00

Received from/return to:  
MINNESOTA DEPARTMENT OF TRANSPORTATION  
2505 TRANSPORTATION ROAD  
P O BOX 768  
WILLMAR, MN 56201-0768

A-339909

6035

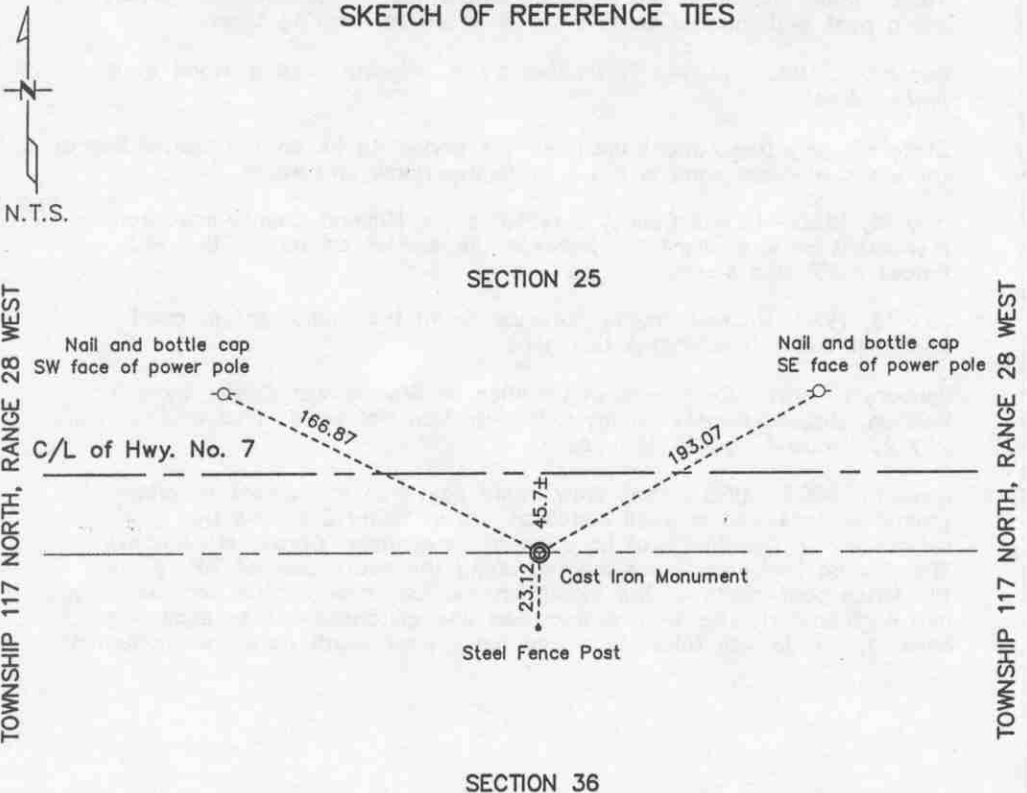
# CERTIFICATE OF LOCATION OF GOVERNMENT CORNER

NORTH QUARTER Corner of Section 36, Township 117 N, Range 28 W  
5th Principal Meridian, State of Minnesota, County of McLEOD

At the corner location shown on the sketch:

- On 6/19/03 found a CAST IRON MONUMENT IN-PLACE  
DATE                      AT GROUND SURFACE.
- left monument as found     lowered monument     removed monument (explain)
- On                      placed a                       
DATE

## SKETCH OF REFERENCE TIES



Statement of evidence for this corner location is on back of this page.

I hereby certify that this document was researched and prepared by me or under my direct supervision.

Signature *Keith Dahl* Date January 29, 2004 License No. 18418  
KEITH DAHL

Title:  Land Surveyor     Professional Engineer     County Surveyor     County Engineer

A-339909

North Quarter Corner  
Section 36, Township 117 North, Range 28 West, 5th Principal  
Meridian

Statement of Evidence:

1856. Oscar Taylor of the General Land Office established this corner. He set a post and marked an elm and a linden for bearing trees.

December, 1897. Survey field notes by I.L. Higgins show a stone at a fence corner.

State Highway Department assumed the corner to be on the center line of the old east-west road in line with fences north and south.

July 16, 1980. McLeod County Surveyor set a McLeod County cast iron monument on a straight line between the section corners in line with fences north and south.

July 13, 1989. McLeod County Surveyor found the monument in good condition and the reference ties good.

January 1, 1991. Certificate of Location of Government Corner by Willard Pellinen, McLeod County Surveyor, Registration No. 9626; filed as Doc. No. 237122, McLeod County, Minnesota.

June 19, 2003. URS survey crew found cast iron monument in-place at ground surface and in good condition. They found 2 of the ties referenced on Certificate of Location of Government Corner cited above. The ties on telephone poles located along the south side of T.H. #7 and the fence post south of the monument no longer exist. The northwesterly and northeasterly ties were remeasured and distances are as shown on Sheet 1. A tie was taken to a new fence post south from the monument.



OFFICE OF COUNTY RECORDER  
MCLEOD COUNTY MINNESOTA

DOCUMENT NUMBER A-339906

CERTIFIED FILED AND/OR RECORDED ON  
January 29, 2004, AT 11:15:00 AM

LYNN ETTIE SCHRUPP, COUNTY RECORDER  
Fees:

EQUIPMENT FUND	\$3.00
SURCHARGE	4.50
SURCHARGE ERER	.50
GENERAL ABSTRACT	12.00
Total	\$20.00

Received from/return to:  
MINNESOTA DEPARTMENT OF TRANSPORTATION  
2505 TRANSPORTATION ROAD  
P O BOX 768  
WILLMAR, MN 56201- 0768

A-339906

6235

# CERTIFICATE OF LOCATION OF GOVERNMENT CORNER

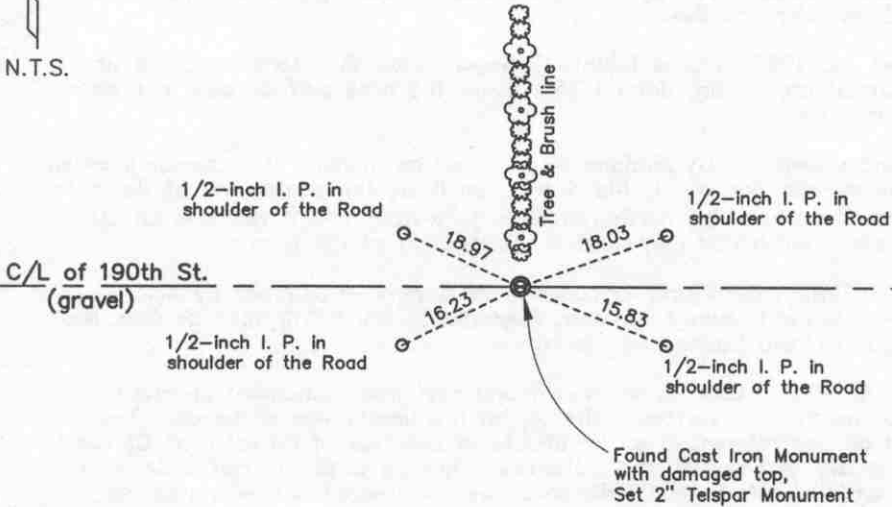
SOUTH QUARTER Corner of Section 36, Township 117 N, Range 28 W  
5TH Principal Meridian, State of Minnesota, County of MCLEOD

At the corner location shown on the sketch:

- On 6/19/03 found a CAST IRON MONUMENT WITH DAMAGED TOP  
DATE IN-PLACE 1-FOOT BELOW ROAD SURFACE
- left monument as found       lowered monument       removed monument (explain)
- On 01/27/04 placed a 2" SQUARE TELSPAR MONUMENT WITH 4" DIAMETER  
DATE CAST IRON CAP INSCRIBED MN/DOT PLS CORNER

## SKETCH OF REFERENCE TIES

SECTION 36, TWP. 117. RANGE 28



SECTION 1, TWP. 116. RANGE 28

Statement of evidence for this corner location is on back of this page.

I hereby certify that this document was researched and prepared by me or under my direct supervision.

Signature *K. Dahl*  
KEITH DAHL

Date January 29, 2004 License No. 18418

Title:  Land Surveyor       Professional Engineer       County Surveyor       County Engineer



**South Quarter Corner  
Section 36, Township 117 North, Range 28 West, 5th Principal  
Meridian**

**Statement of Evidence:**

1855. John Ryan of the General Land Office set a post and marked 2 elms for bearing trees.

November, 1968. McCombs Knutson Associates (Dickman Knutson, county surveyor) measured the south line of Section 36 and found a square iron bar down 1 foot below the road surface. This was in the center line of the east-west road and in line with a fence running north.

Knutson replaced the iron bar with a McLeod County cast iron monument and took reference ties.

August 22, 1991. McLeod County Surveyor found the monument, top of monument broken off, down 1 foot below the road surface and took new reference ties.

The monument set by Knutson is accepted as marking the correct location of the quarter corner. It fits occupation lines, the center line of the road and the fence running north (fence is gone now) and it replaces an older monument which had perpetuated the location of the corner.

July 16 1992. Certificate of Location of Government Corner by Willard Pellinen, McLeod County Surveyor, Registration No. 9626; filed as Doc. No. 246522, McLeod County, Minnesota.

June 19, 2003. URS survey crew found cast iron monument in-place 1-foot below road surface. The top of monument was damaged. They found all ties referenced on Certificate of Location of Government Corner cited above and verified the distances. The SW & SE tie distances were good and the NW & NE tie distances were corrected and so noted on Sheet 1.

January 27, 2004. URS survey crew set 2" square Telspar Monument with 4" diameter Cast Iron Cap inscribed MN/DOT PLS Corner directly over the in-place Cast Iron Monument.



OFFICE OF COUNTY RECORDER  
MCLEOD COUNTY MINNESOTA

DOCUMENT NUMBER A-339907

CERTIFIED FILED AND/OR RECORDED ON  
January 29, 2004, AT 11:15:00 AM

LYNN ETTIE SCHRUPP, COUNTY RECORDER  
Fees:

EQUIPMENT FUND	\$3.00
SURCHARGE	4.50
SURCHARGE ERER	.50
GENERAL ABSTRACT	12.00
Total	\$20.00

Received from/return to:  
MINNESOTA DEPARTMENT OF TRANSPORTATION  
2505 TRANSPORTATION ROAD  
P O BOX 768  
WILLMAR, MN 56201-0768

A-339907

6236

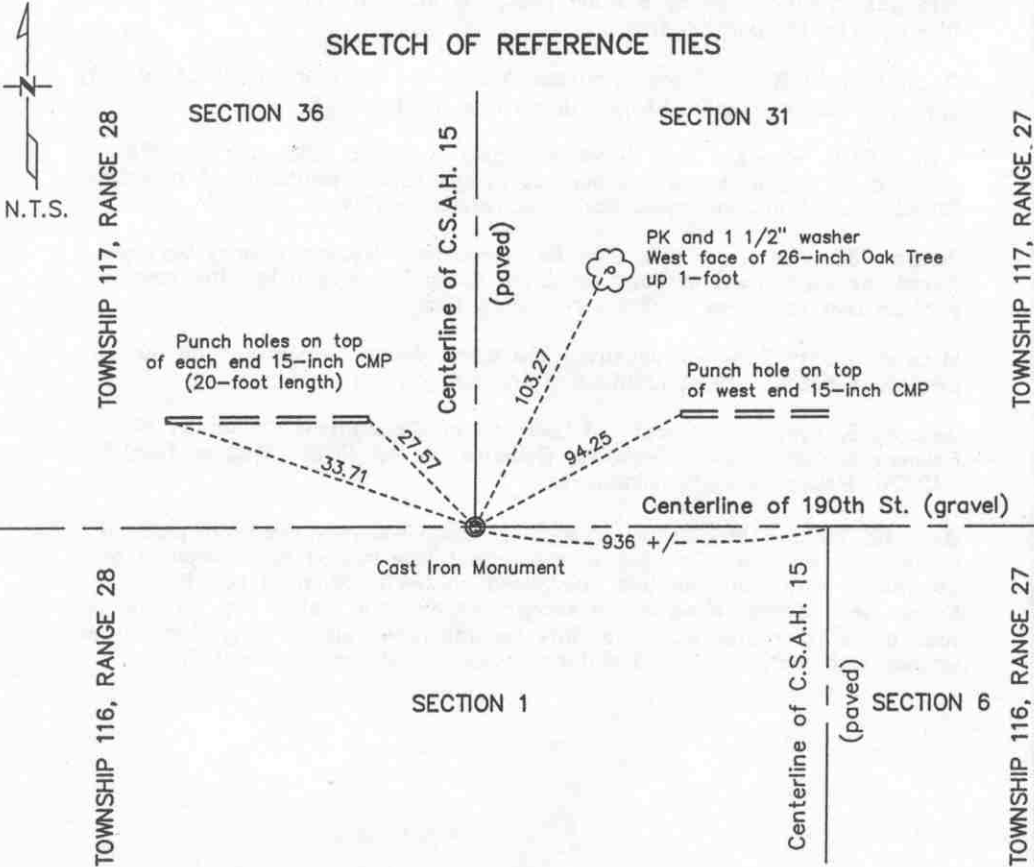
**CERTIFICATE OF LOCATION OF GOVERNMENT CORNER**

SOUTHEAST Corner of Section 36, Township 117 N, Range 28 W  
5TH Principal Meridian, State of Minnesota, County of MCLEOD

At the corner location shown on the sketch:

- On 6/19/03 found a CAST IRON MONUMENT IN-PLACE  
DATE 6" BELOW ROAD SURFACE
- left monument as found       lowered monument       removed monument (explain)
- On \_\_\_\_\_ placed a \_\_\_\_\_  
DATE \_\_\_\_\_

**SKETCH OF REFERENCE TIES**



Statement of evidence for this corner location is on back of this page.

I hereby certify that this document was researched and prepared by me or under my direct supervision.

Signature *Keith Dahl* Date January 29, 2004 License No. 18418  
KEITH DAHL  
Title:  Land Surveyor       Professional Engineer       County Surveyor       County Engineer

Southeast Corner  
Section 36, Township 117 North, Range 28 West, 5th Principal  
Meridian

Statement of Evidence:

This corner was originally established by the General Land Office in 1855 and was monumented by a wood post. John Ryan marked an ash and a hickory tree for bearing trees.

December, 1968. McCombs Knutson Associates (Dickman Knutson, county surveyor) found a spike below the surface of the road.

April, 1970. Knutson dug below the spike found in 1968 and found a stone down 2 feet below the surface of the road. Knutson set a McLeod County cast iron monument and took reference ties.

January 30, 1991. No reference ties remaining. McLeod County Surveyor found the monument in good condition down 6 inches below the road surface and took new available reference ties.

McLeod County Surveyor accepted the stone found by Knutson as having perpetuated the correct location of the section corner.

January 5, 1992. Certificate of Location of Government Corner by Willard Pellinen, McLeod County Surveyor, Registration No. 9626; filed as Doc. No. 242776, McLeod County, Minnesota.

June 19, 2003. URS survey crew found cast iron monument in-place 6" below road surface. The top of monument was rusted but overall in good condition. They found all ties referenced on Certification of Location of Government Corner cited above except the nail and bottle cap on the west face of 16" diameter oak tree. This tie was reset with a 1-1/2" diameter washer with a P.K. nail and distance taken as shown on Sheet 1.